

We've made the check-in process for the engineering scholarship competition very easy:

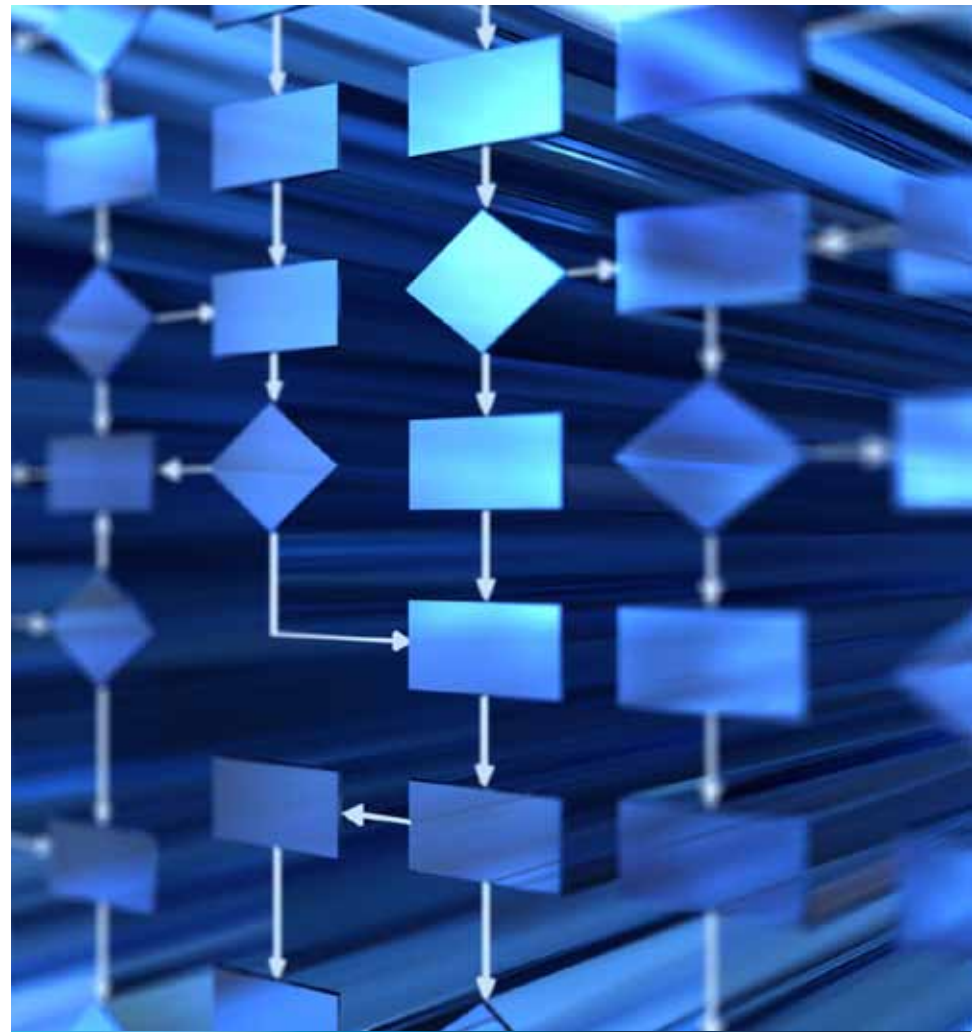
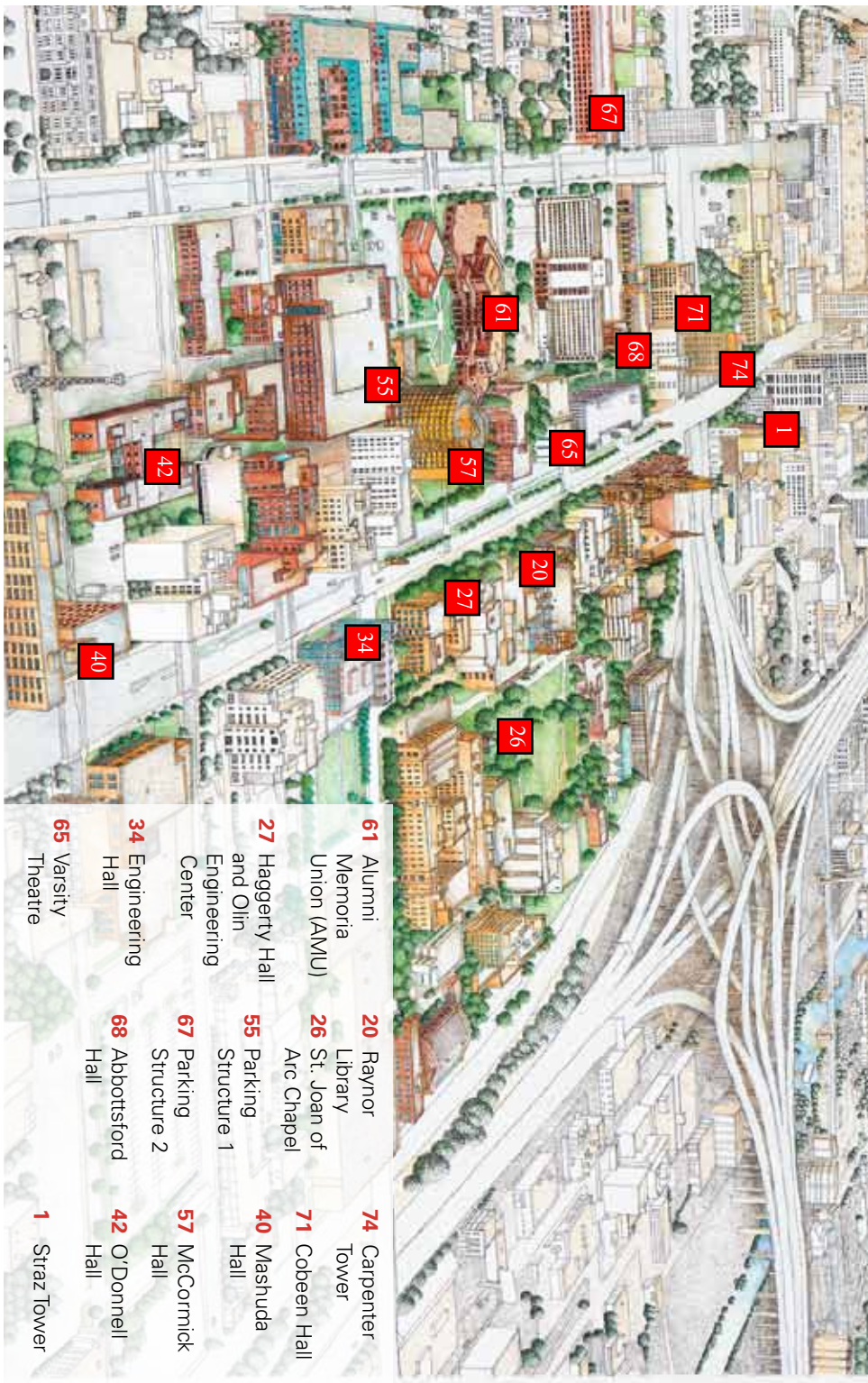
# Checking in?

1. Take a Schedule From the Table
2. Grab a Bite to Eat in Marquette Place
3. Relax.

No lists. No lines. No headaches.  
We'll direct students to the exam at the appropriate time.

## Remember your photo ID!

You will not be permitted to take the exam without your ID.



## SCHOLARSHIP COMPETITION

COLLEGE OF ENGINEERING  
Saturday, February 25, 2012



Stop by the Open House  
to see if you've won!



MARQUETTE  
UNIVERSITY

Be The Difference.

# SCHEDULE OF EVENTS SCHOLARSHIP COMPETITION & OPEN HOUSE

- 8:15 am **MORNING REFRESHMENTS**  
Alumni Memorial Union, Marquette Place
- 9–11:00 am **SCHOLARSHIP EXAMINATION**  
Alumni Memorial Union Ballroom, 3rd floor  
Meet your parents in Marquette Place beginning at 10:30 am.  
*Be sure to have your photo ID with you.*
- 10:30 am – 1:00 pm **ENGINEERING OPEN HOUSE**  
Haggerty Hall, Olin Engineering, & Engineering Hall  
Department homerooms, laboratories and facility tours  
(see right panel)
- 10:30 am – 1:00 pm **VIEW ENGINEERING HALL**  
Take a self guided tour of Engineering Hall
- 11:00 am – 1:00 pm **LUNCH**  
Haggerty Engineering, The Pit, 1st floor
- 11:45 pm – 12:15 pm **CURRENT STUDENT PANEL**  
Olin Engineering, 202  
Ms. Molly Baker, Moderator
- Noon – 1:15 pm **CAMPUS TOURS**  
Engineering Hall Main Entrance Lobby  
*Tours depart continuously. Last tour departs at 1:15 pm*
- Noon – 4:00 pm **RESIDENCE HALL TOURS**  
Tours available on the quarter hour from the front desks of the following halls: Abbottsford (co-ed); Carpenter Tower (co-ed, engineering floors) Cobeen (women); Mashuda (co-ed); McCormick (co-ed); O'Donnell (men); Straz Tower (co-ed, honors floors)  
Optional: Ride the Express LIMO to the residence halls. LIMO service begins at SHAMU (between Schroeder Hall and the Alumni Memorial Union) and loops through campus. Depart at your selected residence hall(s) and ride again to another hall or the parking structures.

## JUST FOR PARENTS - Ms. Molly Baker, Moderator

- 9–10:30 am Parent Program, Varsity Theatre
- 10:30–11 am Meet your student in Marquette place after the examination  
Marquette Place, AMU 2nd floor
- 10:30 am–1 pm College of Engineering Open House

## DEPARTMENT LABORATORY & FACILITY TOURS

### Discovery Learning Center: Engineering Hall, 125

The Discovery Learning Center supports student-generated projects to develop prototypes or “proofs of concept.” The center affords students an opportunity to conduct their own projects.

### Engineering Freshman Lab: Engineering Hall, 128

View current freshman projects.

### Biomedical Engineering Information: Engineering Hall 136

The Biomedical Engineering labs are currently under construction and scheduled to open Fall 2012 on the 3rd floor of Engineering Hall. In the interim, the department will provide visitors with examples of our students' laboratory experiences in a modified setting.

**Freshman Lab:** Current freshmen will display their work in the areas of Physiological Monitoring and Imaging. **Engineering Hall 136**

**Biocomputers Lab:** Seniors in Biocomputing will share their work in the area of microcontroller based technology typically used in medical instrumentation. **Engineering Hall 136**

**Bioelectronics Lab:** Bioelectronics majors will display their constructed circuits for medical monitoring, electronic therapy and wireless transfer of physiologic data. **Engineering Hall 136**

**Biomechanics Lab:** Biomechanics students will show visitors experiments in motion analysis and musculoskeletal modeling. **Engineering Hall 136**

### Electrical & Computer Engineering Information: Engineering Hall 053

**Analog / Digital Electronics:** Junior and senior students will demonstrate several projects that illustrate the design process through implementation. Discrete and integrated electronics as well as mechanical components will be used. **Engineering Hall 121**

**Analog / Digital Electronics:** Freshmen students will show some features of the roomba (the vacuum cleaner, not the dance). Motors, sensors, microcontrollers, software and communication options will be demonstrated.

**Computer Hardware Lab:** Students will demonstrate computer games that they have designed using GAMEMAKER. Visitors will be able to play these games and learn how these games were made.

### Civil, Construction, & Environmental Engineering Information: Engineering Hall 021

**Engineering Materials and Structural Testing Laboratory:** The student chapters of the American Society of Civil Engineers and Builders Coalition of Marquette will host tours of the brand new, state-of-the-art Structures and Materials Testing labs. The students and Faculty will be on hand to answer questions and share experiences with prospective students and their parents. **Engineering Hall 061**

### Mechanical Engineering Information: Engineering Hall 041

**Energy Lab:** An undergraduate windtunnel laboratory will experimentally demonstrate flow separation and loss of lift over an airfoil.

**Machine Design Lab:** Junior level course introduces students to design and use of machine elements and engineering components. **Engineering Hall 161**



# MARQUETTE UNIVERSITY

## COLLEGE OF ENGINEERING

**STUDENTS:** Join Engineering Student Council for Pizza at Casino Night held in Engineering Hall from 6:00 pm until 9:00 pm. Meet MU Engineering students, faculty and your future classmates.

**PARENTS:** Join Marquette Engineering Faculty, Administration and Alumni in a great Wisconsin tradition... the **Friday Night Fish Fry!** This free event for parents is a great opportunity to speak with Marquette personnel, Alumni and meet other parents. The event will be held in the Alumni Memorial Union and will begin at 6:00 p.m. and continue informally until 8:00 p.m. You can come and go at your pleasure. After dinner and conversation join your student at Casino Night!

Let us know by Wednesday, February 22nd if you would like to attend by either calling 414-288-6720 or email: [engineering@marquette.edu](mailto:engineering@marquette.edu). Just type "Fish and Chips" in the subject line and tell us how many will be attending.

So come have dinner on us.

Because the students shouldn't be the only ones having fun...

### College of Engineering

Marquette University  
P.O. Box 1881  
Milwaukee, WI 53201-1881

Phone: 414-288-6720  
Fax: 414-288-2106  
Email: [engineering@mu.edu](mailto:engineering@mu.edu)



## Parent's Fish and Chips

# 100% OFF

Alumni Memorial Union– Ballrooms

**Friday, February 24, 2012 6:00-8:00 p.m.**