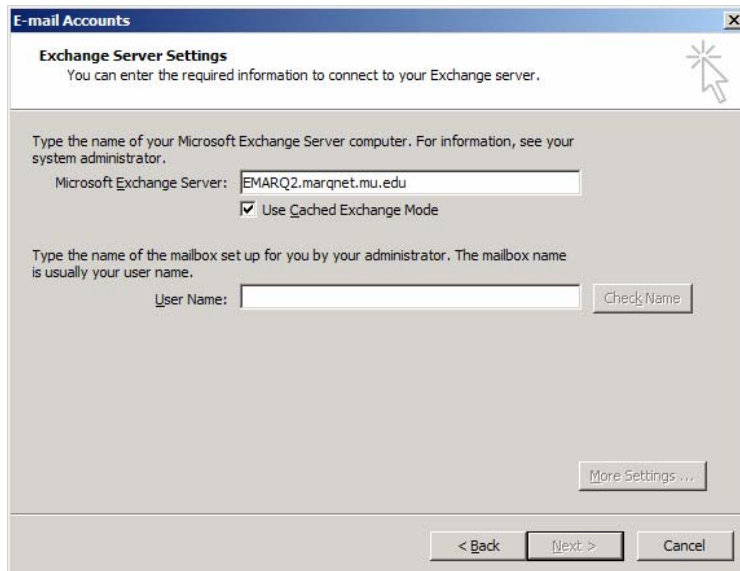


**Cached Exchange Mode.** Cached Exchange Mode provides you with a better experience when you use a Microsoft Exchange Server e-mail account. A copy of your mailbox is stored on your computer. This copy provides quick access to your data and is frequently updated with the mail server.

If you work offline, whether by choice or due to a connection problem, your data is still available to you instantly wherever you are. If a connection from your computer to the computer running Exchange server isn't available, Outlook switches to **Trying to connect** or **Disconnected**. If the connection is restored, Microsoft Outlook automatically switches back to **Connected** or **Connected (Headers)**. Any changes you make while a connection to the server isn't available are synchronized automatically when a connection is available. You can continue to work while changes are synchronized.

**To configure Outlook 2003 client for this feature:**

1. On the **Tools** menu, click **E-Mail Accounts**, click **View or change existing e-mail accounts**, and then click **Next**.
2. In the **Outlook processes e-mail for these accounts in the following order** list, click the Exchange Server e-mail account, and then click **Change**.
3. Under **Microsoft Exchange Server**, select the **Use Cached Exchange Mode** check box.

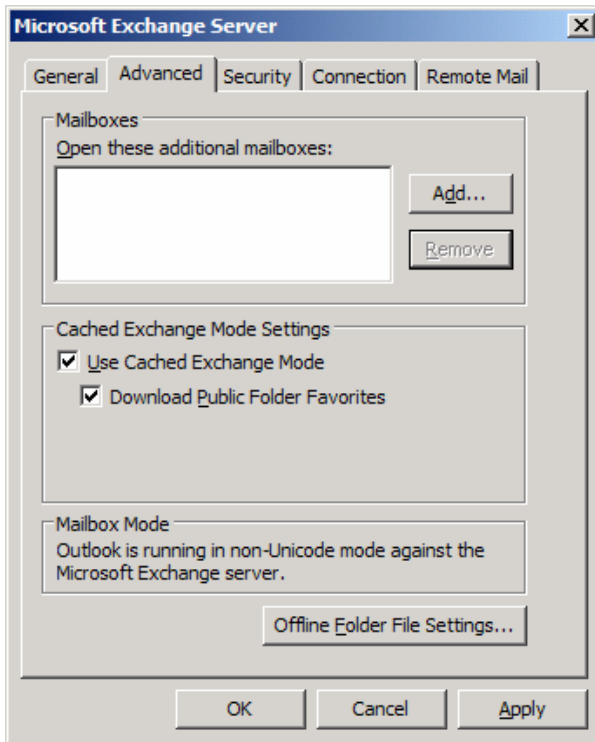


4. Exit and restart Microsoft Outlook.

**To download Public Folder information using Cached Exchange Mode:**

1. On the **Tools** menu, click **E-mail accounts**, select **View or change existing e-mail accounts**, click **Next**, select the Exchange e-mail account, and then click **Change**.
2. Click **More Settings**, then click the **Advanced** tab.

3. Under **Cached Exchange Mode Settings**, select the **Download Public Folder Favorites** check box.



© Microsoft Corporation