

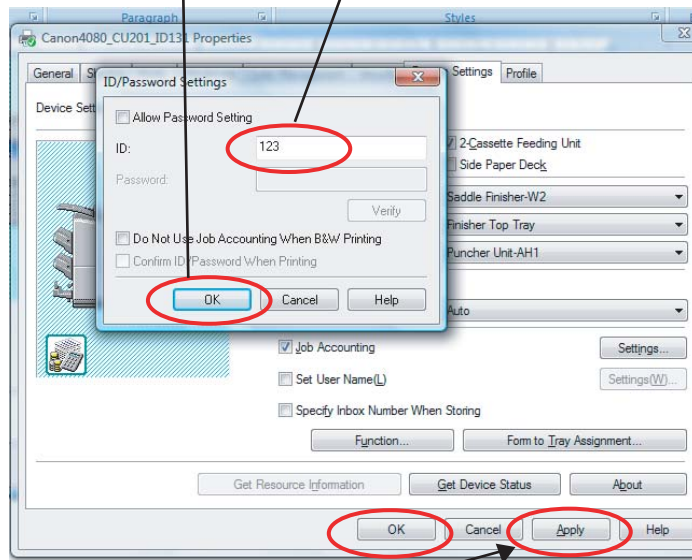
Canon Equipment



Canon Equipment



Step Eight - Add your code within ID section and make certain all other boxes are unchecked
Step Nine - Click on OK when finished



Step Ten - Select Apply to register all changes and then select OK to finish.

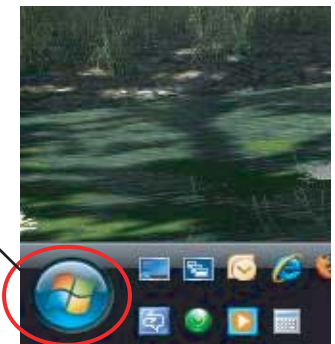
You have now set up your driver to record your prints to the number provided within the ID section. This will now be an automatic function when printing.

Enabling Codes within your print driver for Vista Users

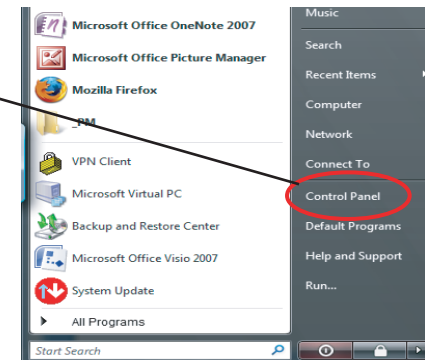
Before proceeding please obtain the orienting code from the MFD/Copier contact in your area.

Please take a few minutes to enable code collection to your print driver.

Step One - Click on the round Windows logo in the left lower corner of your screen



Step Two - Select Control Panel



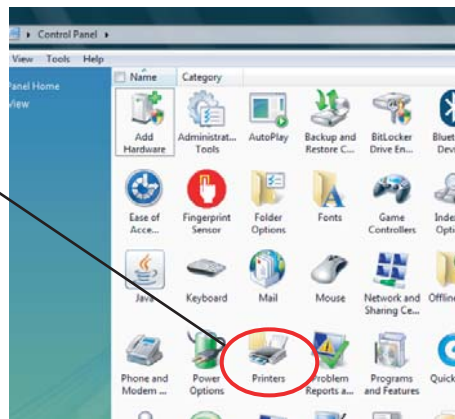
Canon Equipment



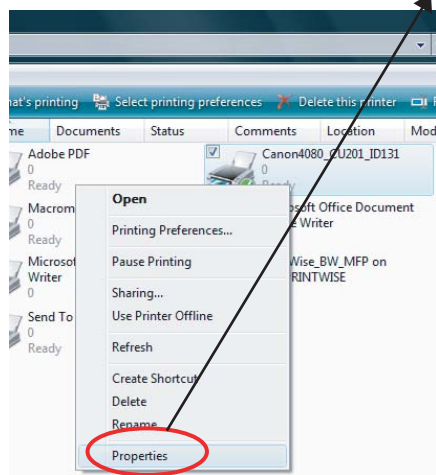
Canon Equipment



Step Three - Select Printers

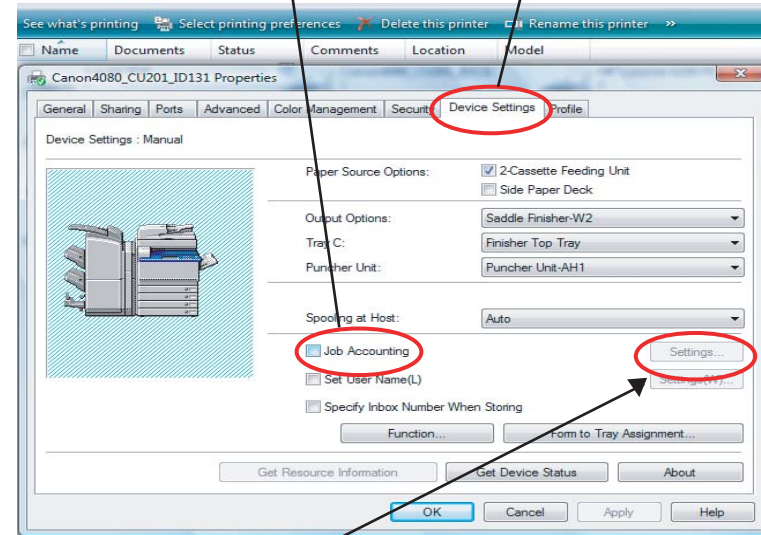


Step Four- Locate your Canon device and right click to select Properties



Step Five - Within the Properties setting select the Device Settings Tab

Step Six - Check the Job Accounting box



Step Seven - Select Settings button of Job Accounting