

Canon Equipment

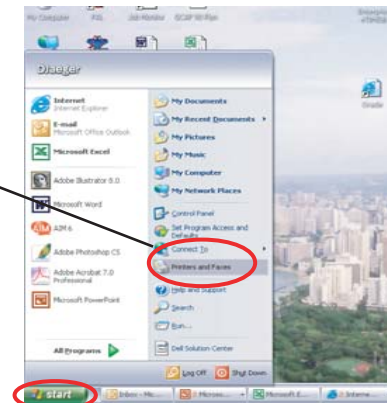


Enabling Codes within your Print Driver for **XP Users**

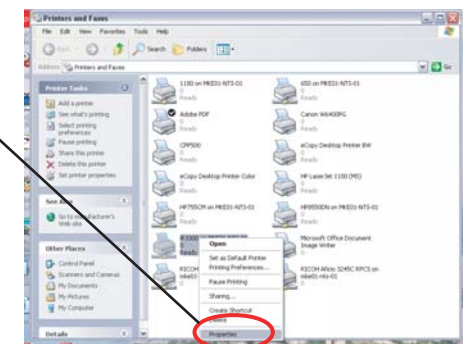
Before proceeding please obtain the orienting code from the MFD/Copier contact in your area.

Please take a few minutes to enable code collection to your print driver.

Step One - Click *Start* and select *Printers and Faxes*



Step Two - Choose your Canon device and right click to select *Properties*



Canon Equipment

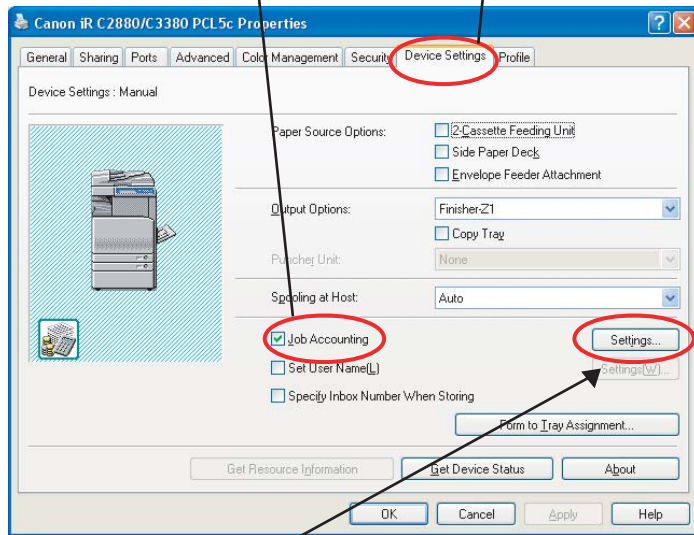


Canon Equipment



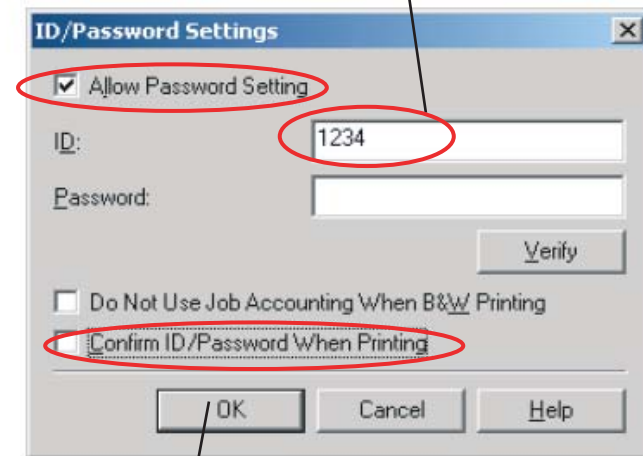
Step Three - Within the properties section select the *Device Settings* tab

Step Four - Check the *Job Accounting* box



Step Five - Select the *Settings* button of Job Accounting

Step Six - Check the box to *Allow Password Setting*, uncheck the box for *Confirm ID / Password for Printing*, and add your code within ID section



Step Seven - Click on *OK* when finished

Step Eight - Select *Apply* to register all changes and then select *OK* to finish

You have now set up your driver to record your prints to the number provided within the ID section. This will now be an automatic function when printing.