

Windows 2000 SP4 configuration for MU_Wireless

Special Note: This document refers to configuration for Windows 2000 SP4 only. Faculty & Staff should refer to the Windows XP document to connect to MU_Admin.

The examples in this document were created using a D-Link wireless adapter. Your wireless adapter configuration tool will be similar in the way it connects to the network as that shown here.

Update and Patch your system

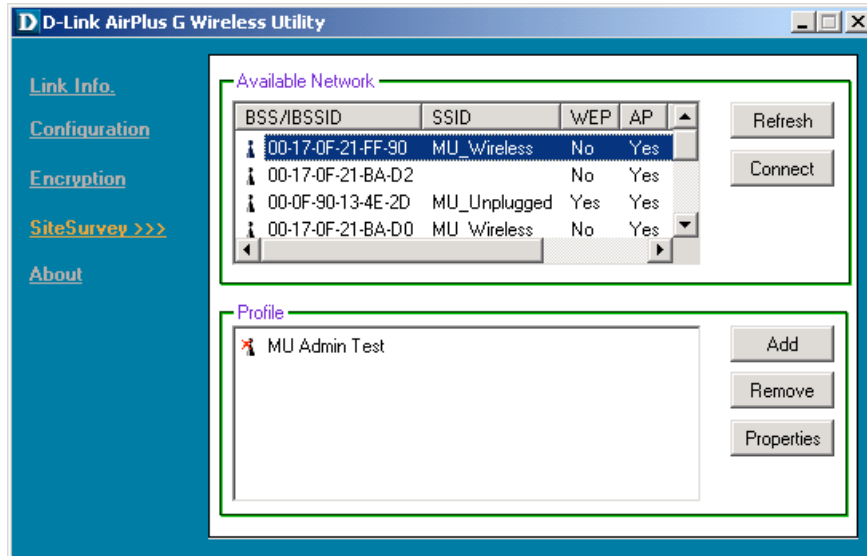
1. Update your system software. Go to <http://update.microsoft.com> to check for and install any needed system updates.
2. Configuring Your Wireless Connection for Windows

Open the configuration tool for you wireless adapter. Generally, there will be an icon in your Windows task bar in a location similar to that shown here. Double-click on the icon to open the configuration tool.



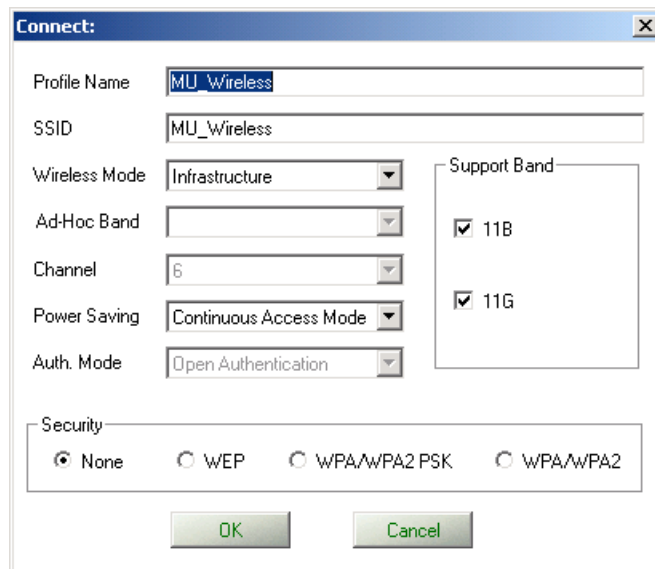
3. Locate available wireless networks

The configuration tool for your wireless card should have a section similar to that shown here in which you can scan for available networks. The available networks generally are listed in order of signal strength, with the strongest signal listed at the top. Locate the first instance of **MU_Wireless** and, as in this example, **connect** to the network.



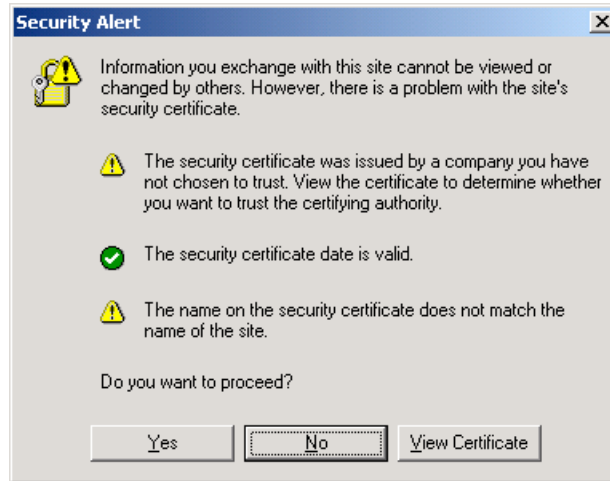
4. Configure a profile

You may be prompted to create a wireless profile. This is so your wireless cards knows that **MU_Wireless** is one of your preferred networks and will attempt to connect when it is available. **MU_Wireless** supports both 802.11b and 802.11g, uses **Infrastructure** as its wireless mode and currently uses no encryption. Configure your profile settings similar to what is shown here.



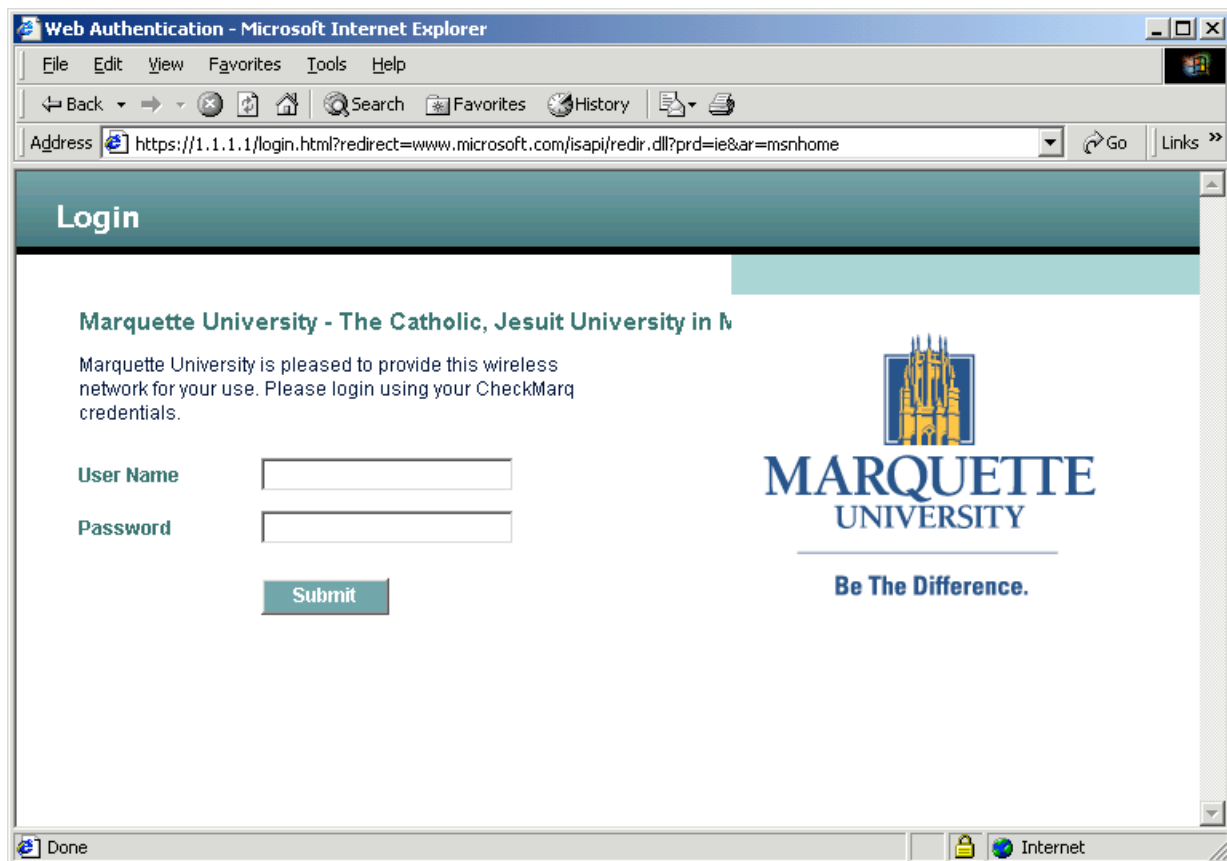
5. Authenticate to the wireless network

Launch Internet Explorer. You may be prompted with a security alert similar to that which is shown here. Click **Yes** to continue.



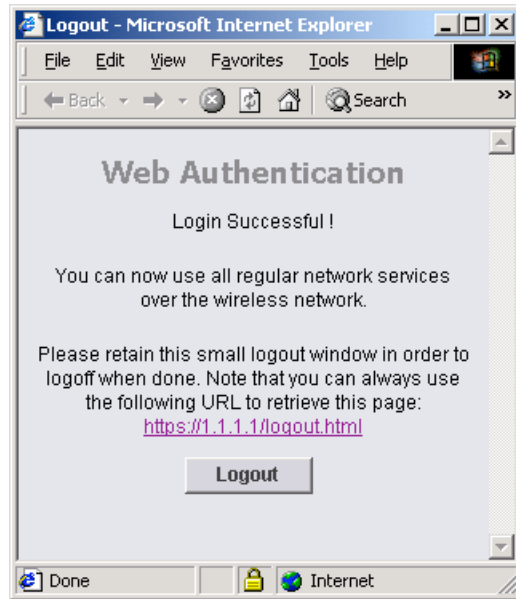
6. Connecting

After the security alert has been accepted, Internet Explorer will present a page that looks like the one shown here. Enter your CheckMarq username and password and then click **Submit** to finalize your connection to MU_Wireless.



SPECIAL NOTE:

You will see a browser popup that looks like the one shown here. This will be used when you are ready to disconnect from the MU_Wireless network. You may minimize this window until you are ready to logout.



Please contact the IT Services Help Desk at 288-7799 for any needed assistance.