

MARQUETTE UNIVERSITY

EXCELLENCE FAITH LEADERSHIP SERVICE



MARQUETTE
UNIVERSITY

Be The Difference.

Excellence Faith Leadership Service



TABLE OF CONTENTS

- 2** History of Marquette
- 4** Financial Snapshot
- 6** Fundraising Snapshot
- 8** Faculty Profile
- 10** Staff Profile
- 11** Student Profile
- 12** Academic Programs
- 17** Accreditations
- 17** Libraries
- 18** Intercollegiate Athletics
- 19** Campus
- 20** Trustees
- 21** University Leadership Council

HISTORY OF MARQUETTE

With its name honoring Father Jacques Marquette (1637–1675), a French Jesuit missionary and explorer of North America, [Marquette University](#) began as a dream of Milwaukee's first bishop, Rev. John Martin Henni. In the mid-1800s Bishop Henni traveled overseas to seek funding for a college. After Belgian businessman Guillaume Joseph DeBoey promised him \$16,000, Bishop Henni purchased a parcel of land on a hill topping today's North 10th and West State streets for Milwaukee's first Catholic college.

Nearly three decades passed before the doors of Marquette College opened on Aug. 28, 1881. Bishop Henni died only a few days later.

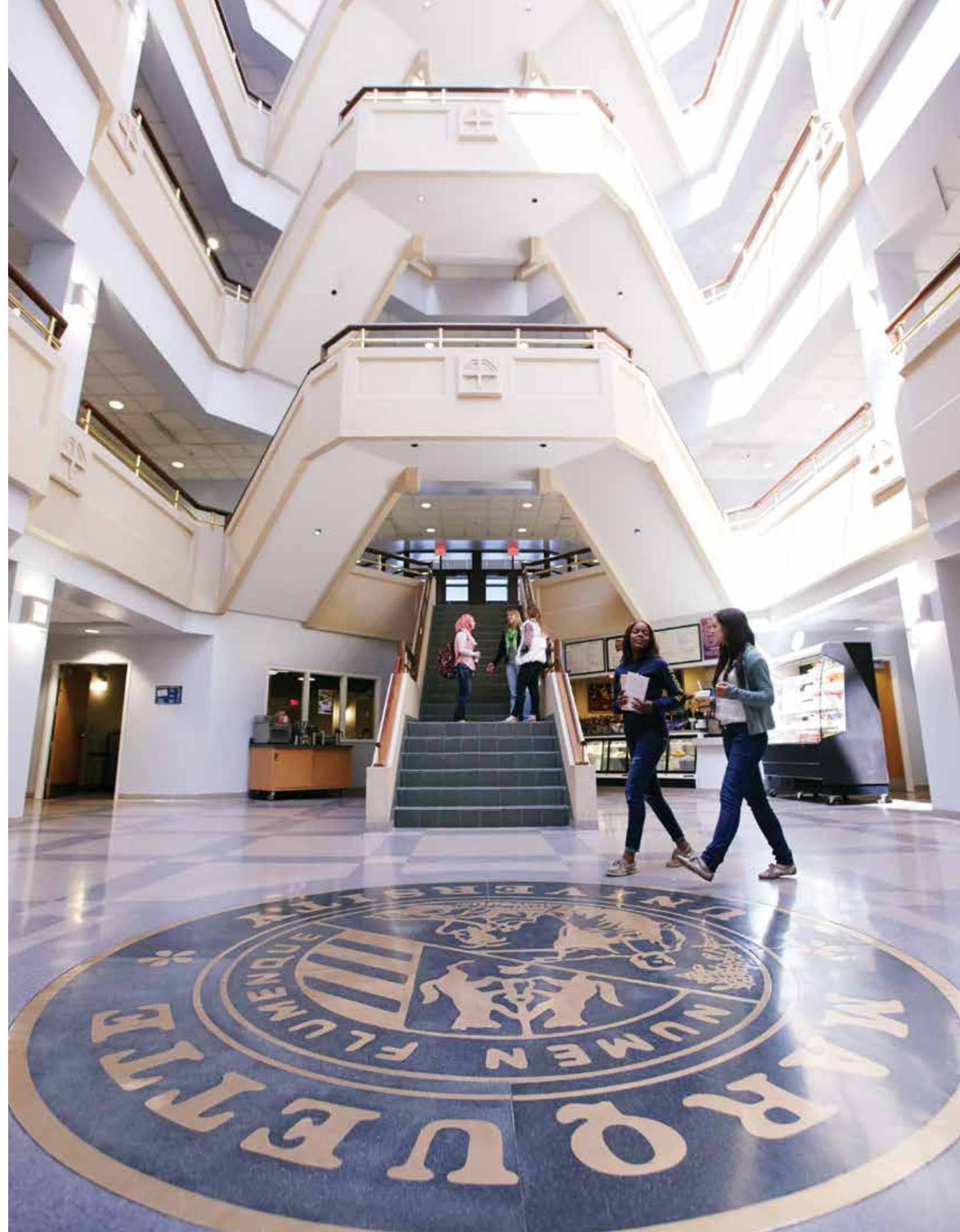
A sizable structure for its day, the college began as a boys' high school and a men's college. Instruction was centered on Jesuit pedagogy with curriculum offerings in Christian doctrine, Latin, Greek, poetry, philosophy, English, grammar and composition, mathematics, and ancient history. At the close of the 1886–1887 school year, Marquette graduated its first students, a class of five men, each earning a bachelor of arts degree. At the time, the school did not offer majors or electives. Marquette kept pace with a rapidly growing nation and an evolving education system, quickly introducing programs in medicine, dental surgery, pharmacy, nursing and law.

In 1909, Marquette President Rev. James A. McCabe, S.J., made a decision that changed Catholic higher education forever. Marquette became the first Catholic university in the world to offer coeducation as part of its regular undergraduate program. Since that time, the role of women at Marquette has changed and expanded dramatically.



Close to its original home, Marquette is located at the edge of Milwaukee's downtown. Thousands of students and [visitors](#) arrive on the 90-acre campus, greeted by stately portals that clearly identify the university grounds. The [campus](#) is dotted with more than 60 structures, 20th-century and contemporary architecture alike. A Marquette campus beautification program included the planting of hundreds of trees, shrubs and flower beds.

Marquette is home to almost 12,000 students and offers more than 80 majors in disciplines ranging from traditional liberal arts to international business, biomedical engineering and physician assistant studies. Always growing, [Marquette's mission](#) has evolved from educating leaders for a nation to preparing students to be global leaders.



FINANCIAL SNAPSHOT

Marquette has weathered all types of economic ups and downs throughout its history. With the university’s nationally ranked academic programs driving strong student demand, ongoing cost-efficiency initiatives, continued donor support, a strong Moody’s credit rating (A2) and a conservative approach to operations, Marquette is well-positioned for the future.

Statement of financial position as of June 30, 2013
(dollars in thousands)

Assets:	
Cash and cash equivalents	\$41,692
Collateral held under securities lending agreement	20,186
Unexpended bond proceeds	37,945
Contributions receivable, net	62,897
Accounts receivable, net	12,277
Student loans receivable, net	41,899
Investments	481,158
Funds held in trust by others	21,086
Net property, buildings and equipment	498,853
All other assets	8,912
Total assets	\$1,226,905
Liabilities:	
Accounts payable and accrued liabilities	\$33,789
Payable under securities lending agreement	20,186
Deferred income and deposits	27,821
Refundable federal loan grants	35,749
Notes and bonds payable	243,946
All other liabilities	16,276
Total liabilities	377,767
Net Assets:	
Unrestricted	202,547
Temporarily restricted	308,578
Permanently restricted	338,013
Total net assets	849,138
Total liabilities and net assets	\$1,226,905

Statement of activities for the year ended June 30, 2013
(dollars in thousands)

	Unrestricted	Temporarily Restricted	Permanently Restricted	Total
Operating revenues:				
Net tuition and fees	\$228,808	–	–	228,808
Government and private grants	23,440	–	–	23,440
Contributions	4,298	16,806	22,803	43,907
Investment income (loss)	240	333	(164)	409
Endowment income				
used in operations	4,855	14,193	297	19,345
Auxiliary and all other	75,247	–	–	75,247
Total operating revenues	336,888	31,332	22,936	391,156
Net assets released from restrictions	32,372	(32,372)	–	–
Total revenues and net assets released from restrictions	369,260	(1,040)	22,936	391,156
Expenses:				
Instruction	109,971	–	–	109,971
Academic support	42,880	–	–	42,880
Research and grants	22,374	–	–	22,374
Libraries	19,709	–	–	19,709
Student services	53,013	–	–	53,013
Auxiliary enterprises	42,754	–	–	42,754
Institutional support	73,562	–	–	73,562
Public service	4,221	–	–	4,221
Total operating expenses	368,484	–	–	368,484
Operating income (loss)	776	(1,040)	22,936	22,672
Nonoperating income (loss)	6,257	8,231	(1)	14,487
Change in net assets	7,033	7,191	22,935	37,159
Net assets, beginning of year	195,514	301,387	315,078	811,979
Net assets, end of year	\$202,547	308,578	338,013	849,138

ENDOWMENT
VALUE HISTORY

Fiscal Year End (dollars in thousands)

'04	\$245,950
'05	\$266,772
'06	\$301,186
'07	\$360,250
'08	\$357,293
'09	\$285,516
'10	\$326,003
'11	\$401,208
'12	\$407,040
'13	\$457,799

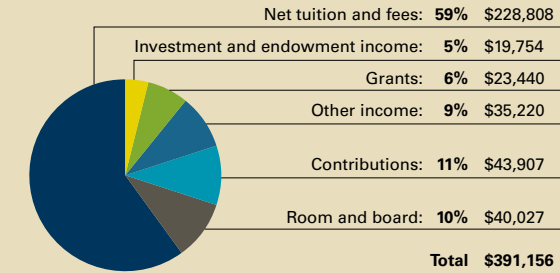
UNDERGRADUATE
STUDENT COSTS
2013-14

Undergraduate tuition — \$34,200

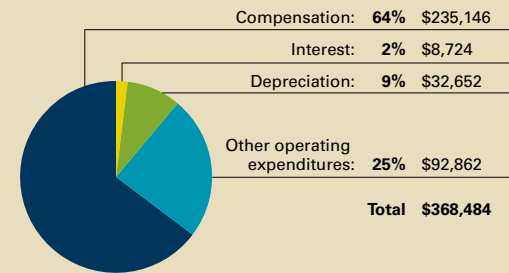
Typical room and board — \$10,730

Fees — \$440

TOTAL OPERATING REVENUES
(dollars in thousands)



TOTAL OPERATING EXPENDITURES
(dollars in thousands)



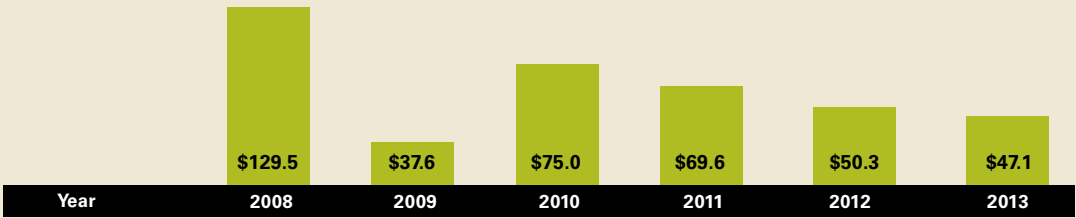
ANNUALIZED RETURNS
as of 6/30/2013

	1 Year	3 Year	5 Year	10 Year
S&P 500 Index	20.6%	18.5%	7.0%	7.3%
MU endowment (Net)	11.5%	11.2%	4.3%	7.3%
Policy Index	9.5%	8.2%	1.7%	6.3%
+ / - Relative to Policy Index	2.0%	3.0%	2.6%	1.0%

FUNDRAISING SNAPSHOT

TOTAL NEW COMMITMENTS

(dollars in millions)



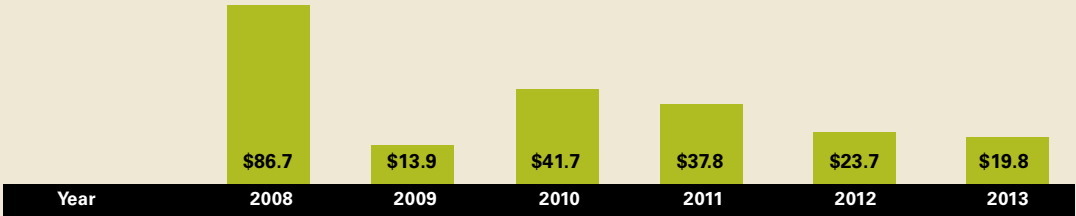
TOTAL CASH

(dollars in millions)

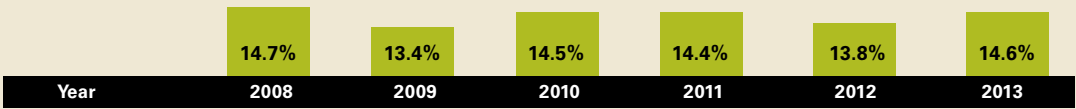
Cash Gifts	\$42.7	\$23.7	\$49.1	\$35.0	31.1	30.4
Pledge Payments	\$22.8	\$17.4	\$17.6	\$25.2	\$19.2	\$28.2
Total Cash	\$65.5	\$41.1	\$66.7	\$60.2	\$50.3	\$58.6
Year	2008	2009	2010	2011	2012	2013

TOTAL PLEDGES

(dollars in millions)



ALUMNI PARTICIPATION



Ray and Kay Eckstein Hall

RECENT REMARKABLE DONATIONS

■ Raymond A. and Kathryn A. Eckstein

In honor of the \$51 million donation from the alumni couple from Cassville, Wis., founders of Marquette Transportation, the Law School building, completed in August 2010, is named Eckstein Hall.

■ Joseph J. Zilber

The four-story Law School structure features the Zilber Forum, recognizing the generosity of the late Milwaukee real estate developer and Marquette alumnus Joseph Zilber, who in 2007 contributed \$30 million to the Law School. Five million was used toward construction of the building, and \$25 million was



designated for student scholarships. Zilber Hall, the university's student services and administration building, which opened in 2009, is named in honor of Zilber and his wife, Vera.

■ Anonymous

An anonymous alumnus provided more than \$30 million to transform engineering education at Marquette, including a significant commitment to the construction of Engineering Hall.

■ J. William and Mary Diederich

A gift of \$28 million was given to the College of Communication, which was named in honor of the donors. The gift is helping create the infrastructure needed to prepare students for careers in the converging world of traditional and digital communication.



■ Helen Way Klingler bequest

The Helen Way Klingler gift of \$18 million sponsors generous awards for teaching and research initiatives. The Klingler College of Arts and Sciences is named in her honor.

■ Robert D. and Patricia E. Kern

The founder of Generac and his wife made a personal donation of \$15 million to launch the construction of Engineering Hall. The Kerns are leading proponents of Project Lead the Way, a national program for middle and high school students geared toward generating interest in engineering before college.

■ Peter and Patricia Frechette

With a gift of \$8.3 million, the Frechettes established the O'Brien Fellowship in Public Service Journalism in honor of Patricia's father, Perry O'Brien, a Marquette journalism alumnus and professional journalist, and her mother, Alicia, a Marquette alumna. The fellowship fosters excellence in journalism and improves the quality of news and information reaching the American public.

■ James H. Keyes

Alumnus James H. Keyes, retired CEO and chairman of the board of Johnson Controls, donated \$7.2 million to fund the Keyes Deanship in the College of Business Administration.



faculty

FACULTY PROFILE

Marquette’s [teacher-scholar model](#) emphasizes the importance of student learning and classroom teaching, as well as scholarship and the discovery of knowledge. From research on addiction to autism in teens, from obesity to infant mental health, from muscle fatigue to the political economy of global media, faculty integrate their research into their teaching, enhancing the classroom experience. Marquette employs more than 1,200 faculty members, almost 700 of whom are full time. Fifty-eight percent are male, and 12 percent are minorities. Of the full-time faculty, 351 are tenured.

Marquette faculty members have been recognized with dozens of awards and honors from national groups and professional organizations. The university’s most recent recipients of Fulbright awards include Dr. Erik Ugland, associate dean for graduate studies and research and associate professor of digital media and performing arts, and Dr. Guy Simoneau, professor of physical therapy.

Dr. Steven Long, associate professor and director of the graduate program in speech-language pathology; Dr. Joseph Daniels, professor of economics and director of the Center for Global and Economic Studies; Dr. Claire Badaracco, professor emerita in the J. William and Mary College of Communication; and Dr. Jodi Melamed, associate professor of English; had Fulbright Awards during the 2012–13 academic year.

Dr. Laura Matthew, associate professor of history, received a fellowship from the American Council of Learned Societies for 2012–13, and Dr. Andrew Kahrl, assistant professor of history, received a fellowship from ACLS for 2013–14.

University Academic Senate

Shared governance, with faculty representation in governance bodies and the formulation of policies, is essential for the vitality of the institution. The [University Academic Senate](#) at Marquette is a deliberative body whose responsibilities include academic planning, review and evaluation of academic programs, and formulation and appraisal of initiatives and policies relevant to the faculty and the academic mission of the university. Membership on the senate includes 29 elected faculty members, three deans, three elected students, and the Provost and two Vice Provosts. The senate’s conclusions and actions are conveyed by the Provost to appropriate university officers. Recommendations of the University Academic Senate are subject to the approval of the President and the Board of Trustees.

Largest grants awarded to Marquette faculty in the past three academic years:

- **\$8 million** to Dr. William Lobb, dean of dentistry, for “Marquette University School of Dentistry Facility Expansion” from the state of Wisconsin.
- **\$4.75 million** to Drs. Gerald Harris and Brian Schmit, professors of biomedical engineering; Taly Gilat-Schmidt, assistant professor of biomedical engineering; and Sheila Schindler-Ivens, associate professor of physical therapy; for “Rehabilitation Engineer Research Center on Technologies for Children with Orthopedic Disabilities” from the U.S. Department of Education.



- **\$1.88 million** to Drs. Murray Blackmore and Robert Wheeler, assistant professors of biomedical sciences; and Michelle Mynlieff, professor of biological sciences; for “Functional Testing of KLF7 in Spinal Cord Injury: An Optogenetic Approach” from the National Institutes of Health.
- **\$1.82 million** to Dr. Brian Schmit, professor of biomedical engineering; Naveen Bansal, professor of mathematics, statistics and computer sciences; Allison Hyngstrom, assistant professor of physical therapy; and Alexander Ng, associate professor of exercise science; for “Sympathetic-somatomotor Coupling in Humans SCI” from the National Institutes of Health.
- **\$1.58 million** to Dr. Robert Bishop, Opus dean of engineering, for “Circle of Discovery” from an anonymous foundation.

AWARDS

Each year, Marquette recognizes the outstanding contributions of faculty and staff with a variety of awards.

- Lawrence G. Haggerty Award for Research Excellence
- Robert and Mary Gettel Faculty Award for Teaching Excellence and John P. Raynor, S.J., Faculty Awards for Teaching Excellence
- Way Klingler Fellowships — Science Fellows: annual grant of \$50,000 for three years; Humanities Fellows: annual grant of \$20,000 for three years
- Way Klingler Young Scholar Awards of up to \$32,000 to afford recipients a one-semester sabbatical
- Way Klingler Sabbatical — academic year support at 100 percent of salary
- University Service Awards

staff

STAFF PROFILE

Marquette has more than 1,600 staff members supporting the educational mission of the university, with a focus on the principle of *cura personalis*, which calls for treating each person with respect for his or her unique gifts and challenges as an individual, and educating students to “Be The Difference” in the world. Many of these employees are in academic departments. The administrative units of the university include Administration, Finance, General Counsel, Human Resources, Intercollegiate Athletics, Marketing and Communication, Mission and Ministry, Planning, Public Affairs, Student Affairs, and University Advancement.



students

STUDENT PROFILE

Record undergraduate applications for admission have kept [Marquette's enrollment](#) stable at almost 12,000 students, with more than 8,300 undergraduates (1,989 freshmen) and more than 3,400 graduate and professional students. The average ACT score for the Class of 2017 was 27, and the average SAT score was 1180. Marquette attracts students from all 50 states and 72 countries.

In 2013, 19 percent of all students identified themselves as minorities. Fifty-two percent of the student population is female. At the undergraduate level, the majority of classes have between 10 and 40 students, with only 63 of 1,404 courses having more than 100 students and 209 having nine or fewer students.

Marquette students hone their leadership skills while becoming engaged members of the campus and broader Milwaukee community through more than 250 recognized [student organizations](#). These groups include community service organizations, student government, fraternities and sororities, honor societies, professional organizations, religious groups, musical organizations, and special interest groups. A wide array of club and intramural sports ranging from baseball, lacrosse, volleyball and rowing/crew is also available.

In Marquette's 2013 [senior survey](#), 87 percent of seniors would choose to attend Marquette again if starting over and 91 percent reported that they were completing their degree as quickly as they had planned.

Eighty-seven percent of graduating seniors reported participating in [community service](#) in some form during college — as part of a class or work study, through a student organization or on their own. In total, undergraduate students spend approximately 422,000 hours of service in the community each year.



The survey also included a series of questions that asked seniors to evaluate how their Marquette education improved their abilities related to the university's institutional learning outcomes. 80 percent of students said their participation in an internship, a co-op experience, a field placement, student teaching, a practicum or a clinical placement enhanced their learning “a great deal.” Almost 70 percent reported that their abilities were enhanced “a great deal” in applying what they learned in class to personal, professional or societal challenges; assuming leadership responsibilities in their professional and community life; and taking responsibility for their behavior. Sixty percent said their ethical decision-making abilities improved “a great deal.”

ACADEMIC PROGRAMS

Demand for a Marquette education has never been greater. Marquette's application numbers have more than quadrupled since 1998, from 5,843 applications to 24,326 undergraduate and transfer applications for 2013, with the quality of students matriculating continually increasing in class rank, test scores and predictive college grade point averages.

Marquette offers [83 undergraduate majors](#), 79 minors, and [pre-professional programs](#) in dentistry, law and medicine. All undergraduate students must take courses in nine knowledge areas to complete the 36-hour [core curriculum](#) requirement. These knowledge areas are rhetoric, mathematical reasoning, individual and social behavior, diverse cultures, literature/performing arts, histories of cultures and societies, science and nature, human nature and ethics, and theology.

Through the Graduate School and Graduate School of Management, Marquette grants doctoral and master's degrees in more than 50 programs, as well as more than 30 certificate degree programs. The university awards professional degrees for successful completion of studies in its School of Dentistry and Law School.

HELEN WAY KLINGLER COLLEGE OF ARTS AND SCIENCES

The [Klingler College of Arts and Sciences](#) is Marquette's largest college, with more than 2,300 undergraduate students enrolled in 40 majors in 13 academic departments. It offers 24 graduate programs, including eight doctorates. Faculty excel at teaching and research, having led the university in awards for teaching excellence and research and scholarship. It is home to some of the university's most important undergraduate programs, including the University Core of Common Studies, the Honors Program, the Freshmen Frontier Program and Introduction to Inquiry. The college's 385 faculty — teacher-scholars who model an integrated academic life — generate significant extramural funding and international recognition for research and scholarship.

COLLEGE OF BUSINESS ADMINISTRATION AND GRADUATE SCHOOL OF MANAGEMENT

Focusing on research, applied learning, ethics and global perspective, the [College of Business Administration and Graduate School of Management](#) educates socially responsible leaders who are prepared to excel in the competitive global environment. The college, which is nationally ranked among the top 100 business schools, includes a full, four-year curriculum and



programming that integrate business thinking with critical thinking, connecting rigorous and substantive course work with character-building Jesuit traditions. The college's excellence in developing applied learning programs in such areas as investment management, entrepreneurship and supply chain management has been co-developed with industry partners. One signature program, Applied Investment Management, has had a 100 percent job placement rate since it began nearly a decade ago.

J. WILLIAM AND MARY DIEDERICH COLLEGE OF COMMUNICATION

The [Diederich College of Communication](#) educates students in the converging world of print, broadcast and electronic communication through innovative curricula, cutting-edge research and access to experts in the field. The college is also home to unique programs in digital media, performing arts and journalism, including the new Perry and Alicia O'Brien Fellowship in Public Service Journalism. Students in all communication disciplines marry theory and skill and master changing technology and media across fields. Notably, the Diederich College is the only Jesuit college of communication accredited by the Accrediting Council on Education in Journalism and Mass Communication and has also earned accreditation by the National Association of Schools of Theater.





ACADEMIC PROGRAMS CONTINUED

SCHOOL OF DENTISTRY

The only dental school in Wisconsin, the Marquette University [School of Dentistry](#) opened its 40,000-square-foot expansion in 2013. The space features new classrooms and cutting-edge technology and enabled an increase in annual dental class size by 25 percent. Founded in 1894, the program is patient-centered and student-focused, with a curriculum that blends basic, clinical and behavioral sciences.

Graduates are contemporary, competent general dentists capable of effectively delivering all facets of dental care. A key provider of oral health in the Milwaukee community and beyond, the MUSoD is one of the state's largest dental Medicaid providers, serving more than 7,000 Medicaid patients annually at three Milwaukee clinics and three affiliated clinics that serve rural Wisconsin populations. Last year, the school treated 30,000 patients during 101,442 visits at seven clinics in 63 of Wisconsin's 72 counties.

COLLEGE OF EDUCATION

For nearly nine decades, the [College of Education](#) has been preparing undergraduate students to teach in elementary, middle and secondary schools. At the graduate level, the college educates students for careers as counselors, master teachers, school principals and superintendents, private-practice counseling psychologists, and higher education faculty and administrators. The college is actively engaged in the community. In addition to teaching and outreach initiatives — including the Hartman Literacy and Learning Center, which serves vulnerable Milwaukee populations — the college supports counseling clinics and research services, a headquarters for off-campus faculty clinics and research. The college also is a key partner and host of the Greater Milwaukee Catholic Education Consortium, which works to sustain and strengthen P-12 Catholic education in the Milwaukee Archdiocese.

COLLEGE OF ENGINEERING

For more than 100 years, the [College of Engineering](#) has prepared engineers to be ethical problem-solvers and create solutions to the global challenges of industry and society. Grounded in the concept of student-centered learning, the college provides students with a world-class curriculum, enriched by design opportunities, research and regional collaboration; 21 engineering-related student organizations; and co-op programs with leading international and local companies that provide invaluable real-world experience.

In 2011, Marquette opened Engineering Hall, a highly innovative 115,000-square-foot facility that puts engineering on display and facilitates a collaborative and interdisciplinary approach for faculty from all disciplines to work with students to solve the challenges of the 21st century.



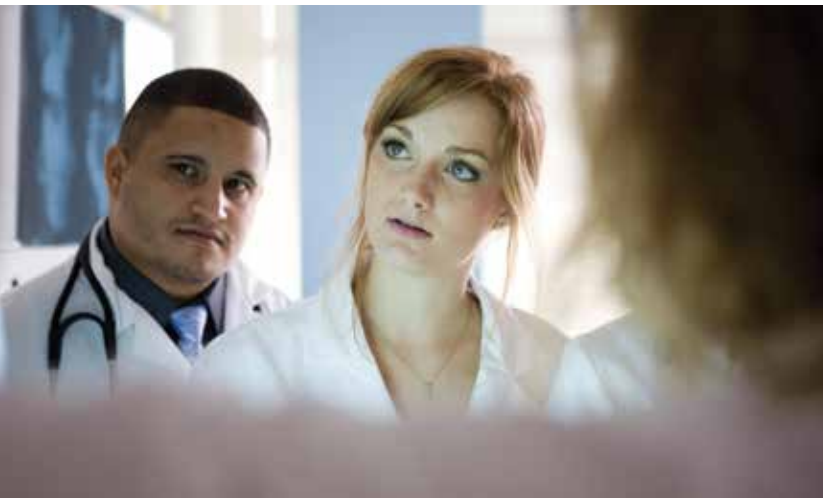
GRADUATE SCHOOL

The [Graduate School](#) administers and ensures the quality, consistency and continuity of Marquette's graduate programs, research and sponsored programs, and the preparation of future faculty. As part of the Graduate School, the [Office of Research and Sponsored Programs](#) helps faculty and administrators build bridges between Marquette and external partnering sponsors and other institutions, serving as the representative for grants, contracts and assurances, and technology transfer.

ACADEMIC PROGRAMS CONTINUED

COLLEGE OF HEALTH SCIENCES

The [College of Health Sciences](#)’ undergraduate and professional programs are among the university’s most academically competitive. Biomedical sciences is the largest declared major at Marquette, with 640 students, and is one of only six such specialized programs in the nation. The physical therapy department, which offers a clinical doctoral degree program ranked 12th nationally by *U.S. News & World Report*, enrolls approximately 200 students. Fueling the academic strength of its programs, the college is a campus leader in research activity, attracting significant support from external funding agencies such as the National Institutes of Health. The college is specifically known for research expertise in neuroscience and neurorehabilitation.



LAW SCHOOL

The only law school in Milwaukee and one of only two in Wisconsin, Marquette University [Law School](#) educates lawyers who practice in all areas of the profession, from private firms to public agencies. Graduates include state and federal judges, business executives, and political leaders. The curriculum is designed to ensure that students will have the substantive knowledge, skills and values essential to practice law in the 21st century. Part of the Jesuit tradition of education is encouraging students to become agents for positive change in society, and Marquette offers pro bono and public interest law opportunities for students. Committed to the core concept of academic freedom and to full



dialogue on any and every issue, Eckstein Hall — the Law School’s 200,000-square-foot facility — has served as a crossroads for discourse on important public policy topics locally and nationally since it opened in 2010.

COLLEGE OF NURSING

The Marquette University [College of Nursing](#) prepares nurse leaders at the baccalaureate and graduate levels to promote health, healing and social justice through clinical practice and the development of nursing knowledge. In 2012, *U.S. News & World Report* ranked the college’s midwifery program 19th nationally and the graduate program in the top 10 percent nationally. The college’s state-of-the-science Wheaton Franciscan Healthcare Center for Clinical Simulation provides a realistic health care environment for students and professionals to develop and enhance essential clinical competencies. Students gain further clinical education providing supervised care for patients in low-income neighborhoods at the Marquette Neighborhood Health Center, the Marquette Clinic for Women and Children, and two primary care clinics in partnership with Children’s Hospital of Wisconsin.

COLLEGE OF PROFESSIONAL STUDIES

With an emphasis on Jesuit values such as ethical leadership, civic engagement and social responsibility, the [College of Professional Studies](#) was established to meet the unique educational needs of adult learners. It does so through a variety of degree and non-degree programs offered on weeknights and Saturdays and online. The college is home to Future Milwaukee, a community leadership development program that enhances leadership skills, develops a deeper understanding of community issues and provides practical experience in implementing community solutions. The program has graduated more than 1,400 individuals during the past three decades.

ACCREDITATIONS

Marquette University is accredited by the [Higher Learning Commission](#), a commission of the North Central Association of Colleges and Schools. Thanks to Marquette’s consistently high standards, specific academic programs have also been accredited by numerous other organizations and associations.

ACCREDITING ORGANIZATIONS

- American Psychological Association
- Association to Advance Collegiate Schools of Business
- Accrediting Council on Education in Journalism and Mass Communications
- National Association of Schools of Theatre
- Commission on Dental Accreditation of the American Dental Association
- National Council for Accreditation of Teacher Education
- Engineering Accreditation Commission of ABET, Inc.
- Accreditation Review Commission on Education for the Physician Assistant, Inc.
- American Society of Exercise Physiologists
- Commission on Accreditation in Physical Therapy Education
- Commission on Accreditation of Athletic Training Education
- Council on Academic Accreditation in Audiology and Speech-Language Pathology of the American Speech-Language-Hearing Association
- National Accrediting Agency for Clinical Laboratory Sciences
- Section of Legal Education and Admissions to the Bar of the American Bar Association
- Commission on Collegiate Nursing Education
- Accreditation Commission for Midwifery Education



LIBRARIES

The [Raynor Memorial Libraries](#) are committed to developing a rich, multimedia collection of resources, essential to advancing Marquette’s teaching and scholarship. Building a robust digital library of electronic resources complements the continuous development of the more traditional collections of books, journals, microforms, videos and other materials that form the historic foundation of the libraries’ holdings. With more than 1.8 million volumes, more than 30,000 full-text e-journals, nearly 1.8 million e-books and hundreds of research databases, the libraries strive to be a dynamic center for discovery and transformation, offering a breadth and depth of information content with robust discovery and delivery tools. The collections are augmented by membership in the Center for Research Libraries, with holdings of more than 5 million items, all of which are available to Marquette faculty and students. The state-of-the-art Raynor facility features a mix of comfortable seating and group study spaces, more than 200 computer stations, laptops on loan, the Digital Media Studio, and 24-hour, seven-days-a-week access to the main-floor Learning Commons during the academic year.

The institutional repository, [e-Publications@Marquette](#), includes digital copies of faculty research and publications and dissertations and theses.

Housed in the libraries, the Department of Special Collections and University Archives contains more than 18,000 cubic feet of archival material and 11,000 volumes. Some of the most popular collections include the original manuscripts and multiple working drafts for three of J.R.R. Tolkien’s most celebrated books, *The Hobbit* (1937), *Farmer Giles of Ham* (1949) and *The Lord of the Rings* (1954–1955), and a small collection of incunabula (from the “cradle period” of Western printing), including a 1473 edition of St. Augustine’s *De Civitate Dei* (The City of God). The department also owns a seven-volume set of the *St. John’s Bible Heritage Edition*, a hand-written, hand-illuminated bible. Many collections have been digitized for easy access.



INTERCOLLEGIATE ATHLETICS

Intercollegiate athletics is a rich part of the Marquette experience, for both students and alumni. The university competes at the NCAA Division I level as a member of the Big East Conference.

Marquette fields teams in the following sports:

MEN

Basketball
Cross Country
Golf
Lacrosse
Soccer
Tennis
Track

WOMEN

Basketball
Cross Country
Volleyball
Lacrosse
Soccer
Tennis
Track



The Marquette student-athlete graduation rate for 2012–13 was **88 percent**.

The average GPA for Marquette student-athletes the past four terms was **3.12**.

In spring 2013, **71 percent** of Marquette student-athletes had a GPA of 3.0 or higher and **64 percent** had a cumulative GPA of 3.0 or higher.

Sixty-two percent of Marquette student-athletes were named to the 2012–13 Big East Conference All-Academic Team.



campus

CAMPUS

During the past decade, Marquette University's Campus Master Plan focused on campus identity and beautification, new facilities and property acquisitions. By 2010, the university had invested more than \$300 million in its near-downtown neighborhood. These investments spurred private development in the neighborhood, with property values more than doubling since 1993. In 2012, planning began for the renovation of the university's three original buildings that make up the historic core of campus — Johnston Hall, Marquette Hall and Sensenbrenner Hall. These iconic buildings serve as the front door for visitors to campus and, once renovated, will house the main office of the Klingler College of Arts and Sciences, the Diederich College of Communication, and four humanities departments. Work on infrastructure upgrades and renovations began in spring 2013 and is expected to be completed in late 2015.



Al McGuire Center



School of Dentistry expansion



Rev. John P. Raynor, S.J., Library



Engineering Hall

RECENT CONSTRUCTION PROJECTS

- 2012–2013
School of Dentistry expansion (\$19.2 million)
- 2010–2011
Engineering Hall (\$50 million)
- 2008–2010
Ray and Kay Eckstein Hall (\$85 million)
- 2008–2009
Joseph and Vera Zilber Hall (\$28.7 million)
- 2003–2004
Wells Street Parking Structure (\$12 million)
- 2003–2004
Al McGuire Center (\$30 million)
- 2001–2003
Rev. John P. Raynor, S.J., Library (\$55 million)
- 2001–2002
School of Dentistry (\$30 million)

trustees

John F. Ferraro
Vice Chair of the Marquette Board,
Bus Ad '77, Global Chief Operating
Officer, Ernst & Young

Richard J. Fotsch
Eng '77, Grad '84, Retired President,
Global Power Group, Kohler Co.

Rev. James G. Gartland, S.J.,
Rector, Blessed Peter Faber Jesuit
Community, Boston College

Darren R. Jackson
Bus Ad '86, President and Chief
Executive Officer, Advance Auto Parts

James F. Janz
Bus Ad '62, Law '64, Managing
Director, Joseph and Vera Zilber
Family Foundation

Rev. Timothy R. Lannon, S.J.
President, Creighton University

Rev. Thomas A. Lawler, S.J.
Provincial, Wisconsin Province of
the Society of Jesus

Patrick S. Lawton
Bus Ad '78, Grad '80, Managing
Director of Fixed Income Capital
Markets, Robert W. Baird & Co.

John P. Lynch
Arts '64, Retired Senior Partner,
Latham & Watkins

Kelly McShane
Arts '68, Retired School Psychologist

Dr. Arnold L. Mitchem
Grad '81, President, Council for
Opportunity in Education

Rev. Joseph M. O'Keefe, S.J.
Professor of Education,
Boston College

James D. O'Rourke
Bus Ad '87, Chief Executive Officer,
A&A Manufacturing Company

Dr. Janis M. Orlowski
Eng '78, Senior Director, Health Care
Affairs, American Association of
Medical Colleges

Kristine A. Rappé
Special Advisor,
Wisconsin Energy Foundation

Glenn A. Rivers
Arts '85, Head Coach,
Los Angeles Clippers

Scott A. Roberts
Bus Ad '85, President, CEO and
Chairman of Ziegler Lotsoff Capital
Management (ZLCM)

Hon. W. Greg Ryberg
Arts '68, Retired Senator,
State of South Carolina

Scott H. Schroeder
Bus Ad '92, Grad '96, Law '96,
Founding Partner, Balyasny Asset
Management

Owen J. Sullivan
Arts '79, Retired CEO of Right
Management and JeffersonWells
and President of Specialty Brands,
ManpowerGroup

Charles M. Swoboda
Chair of the Marquette Board,
Eng '89, Chairman and Chief
Executive Officer, Cree Inc.

Cherryl T. Thomas
Arts '68, President and Chief
Executive Officer, Ardmore
Associates, LLC

Benjamin S. Tracy
Comm '98, Grad '04,
National Correspondent, CBS News

Margaret Troy
Nurs '74, President and Chief
Executive Officer, Children's Hospital
and Health System

Rhona Vogel
Bus Ad '76, President,
Vogel Consulting Group

James M. Weiss
Arts '68, President, Weiss Capital
Management, Inc.

Thomas H. Werner
Eng '86, President, CEO and Chairman
of the Board, SunPower Corporation

Rev. Robert A. Wild, S.J.
Interim President, Marquette
University

Hon. James A. Wynn, Jr.
Law '79, Federal Appeals Court Judge,
US Court of Appeals for the Fourth
Circuit

Rev. Michael A. Zampelli, S.J.
Rector, Santa Clara Jesuit Community,
and Associate Professor of Theatre
and Dance, Santa Clara University

Anne A. Zizzo
Jour '87, CEO, Zizzo Group Marketing
+ Public Relations + New Media



UNIVERSITY LEADERSHIP COUNCIL

University Administrators

Rev. Robert A. Wild, S.J.
Interim President

Rana H. Altenburg
Vice President for Public Affairs

Cynthia M. Bauer
Vice President and General Counsel

Robert (Roby) Blust
Dean of Undergraduate Admissions
and Enrollment Management

Dr. Margaret Faut Callahan
Dean of the College of Nursing,
Interim Provost

Cas Castro
Vice President of Human Resources

Thomas P. Ganey
Vice President of Planning and
University Architect

John C. Lamb
Vice President for Finance

Dr. Gary Meyer
Vice Provost for Undergraduate
Programs and Teaching

Dr. L. Christopher Miller
Vice President for Student Affairs

Dave Murphy
Vice President for Marketing and
Communication

Dr. Stephanie J. Russell
Vice President for University
Mission and Ministry

Arthur F. Scheuber
Vice President for Administration

Michael VanDerhoef
Vice President for University
Advancement

Bill Cords
Interim Vice President and
Director of Athletics

Academic Deans

Dr. Lori Bergen
Dean of the J. William and Mary
Diederich College of Communication

Dr. Robert H. Bishop
Dean of the College of Engineering

Dr. William E. Cullinan
Dean of the College of Health
Sciences

Dr. Robert J. Deahl
Dean of the College of Professional
Studies

Dr. Mark J. Eppli
Interim Dean of the College of
Business Administration and Graduate
School of Management

Dr. William A. Henk
Dean of the College of Education

Dr. Richard C. Holz
Dean of the Helen Way Klingler College
of Arts and Sciences

Dr. Jeanne Hossenlopp
Vice Provost for Research and
Dean of the Graduate School

Joseph D. Kearney
Dean of the Law School

Dr. William K. Lobb
Dean of the School of Dentistry

Janice S. Welburn
Dean of Libraries

University Academic Senate
Representatives

Dr. Marilyn Frenn
Chair of University Academic Senate,
Professor, College of Nursing

Dr. Timothy Melchert
Vice Chair of University Academic Senate,
Associate Professor, College of Education

Staff Assembly Representative

Lisa Olson
Director of Business Operations,
Information Technology Services