

“Developing college and university students into responsible citizens and leaders with a lifelong commitment to serving the children of the world.”

- Circle K International’s Mission

Circle K **for** **Newcomers**

**A Complete
Guide for new
members to
Circle K
International!**

**For more Information visit
www.circlek.org or
www.wumcirclek.org**

**Compiled by Caitlin Schaffner
W-UM District Bulletin Editor**

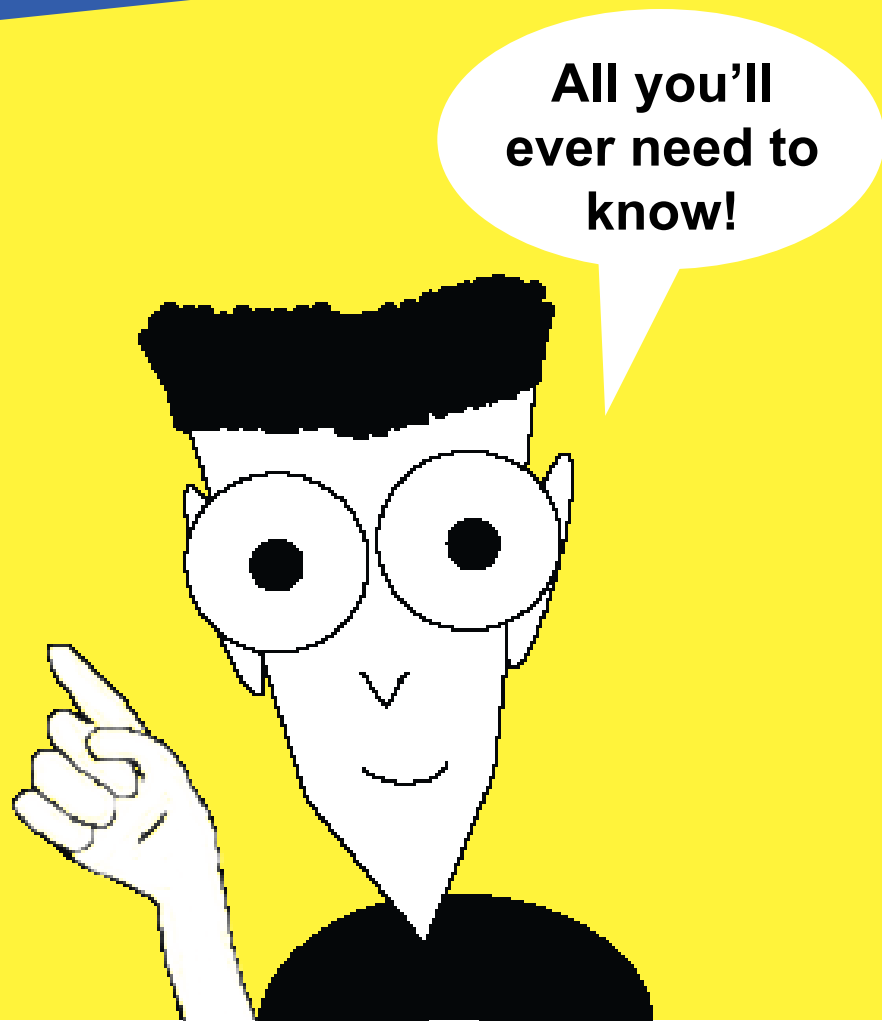


Table of Contents

What is Circle K?	01
Benefits of Circle K	01
Why do we pay dues?	01
Circle K Pledge and Motto	01
Tenets of Circle K International	02
Objects of Circle K International	02
Circle K Structure	03
Roles of the District Board	04
WUM-kipedia	04
W-UM Map	05

What is Circle K?

Circle K is a Service Learning Program of Kiwanis for professional men and women. There are Circle K clubs on more than 550 college and university campuses worldwide, with a total of more than 12,800 members.

Your college or university Circle K club is a member of the Wisconsin-Upper Michigan (W-UM) district with fellow districts across the United States, Canada, and the Caribbean.

Kiwanis' extended family not only includes Circle K but Key Club (high school), Builders Club (junior high school), K-Kids (primary school), and Aktion Club (adults with disabilities).

The W-UM district consists of more than 20 colleges and universities with more than 500 members. The district is divided into seven divisions that cover all of Wisconsin and Upper Michigan. In fact, W-UM's own Carthage College started the first ever Circle K Club.

What are the benefits?

Circle K is a great opportunity to better your community, meet great people, and have fun! Members learn the importance of volunteering, developing leadership skills, develop friendships, and networking with professionals through

Kiwanis among other things. Circle Kers from all over the W-UM district come together a few times a year for service and socializing. Scholarships are also available to paid Circle K members.

Why do we pay dues?

For each club to maintain its affiliation with Circle K International (CKI), all members must pay dues annually to the district and international.

Dues go towards district officer visits, publication of the *Circle of Sharing* (W-UM newsletter), publication of the CKI magazine, International convention promotion, International Trustee visits and other administrative costs. By paying dues, you will

be eligible for scholarships, receive a membership card and pin, member handbook, subscription to Circle K Magazine and *Circle of Sharing*.

The Circle K Pledge & Motto

"I pledge to uphold the Objects of Circle K International, to foster compassion and goodwill toward others through service and leadership, to develop my abilities and the abilities of all people, and to dedicate myself to the realization of mankind's potential."

Motto: We Build!



The Tenets of Circle K

Service

“Collectively, Circle K members perform more than one million hours of service in their campuses and in their communities annually. Without service, Circle K International would be just another campus activity. Through service, college students are making the world a better place.”

Leadership

“Leadership opportunities afford Circle K members the resources and tools needed to become active citizens. Circle Kers assume leadership responsibilities at all levels of the organization and through various experiential training conferences.”

Fellowship

“With each element and aspect of Circle K International, members experience fellowship and develop lifelong relationships with fellow collegians, advisors, Kiwanians, and citizens in their communities.”

The Objects of CKI

To emphasize the advantages of the democratic way of life

To provide the opportunity for leadership training in service.

To serve on the campus and in the community.

To cooperate with the administrative officers of

the educational institutions of which the clubs are a part.

To encourage participation in group activities.

To promote good fellowship and high scholarship.

To develop aggressive citizenship and the spirit of service for improvement of all human relationships.

To afford useful training in the social graces and personality development.

To encourage and promote the following ideals:

To give primacy to the human and spiritual rather than to the material values of life.

To encourage the daily living of the Golden Rule in all human relationships

To promote the adoption and the application of high social, business, and professional standards.

To develop, by precept and example, a more intelligent, aggressive, and serviceable citizenship.

To provide through Circle K clubs, a practical means to form enduring friendships, to render altruistic service, and to build better communities.

To cooperate in creating and maintaining that sound public opinion and high idealism, which makes possible the increase of righteousness, justice, patriotism, and goodwill.

Circle K Structure

International Level

“The International Board of Trustees is composed of the President, the Vice-President, and nine Trustees. These students administer the organization at the International level. They identify critical issues facing the organization and evaluate strategies to help the organization support its mission. The International Board sets the policies for Circle K, develops Service Initiative programs, and advises and educates the

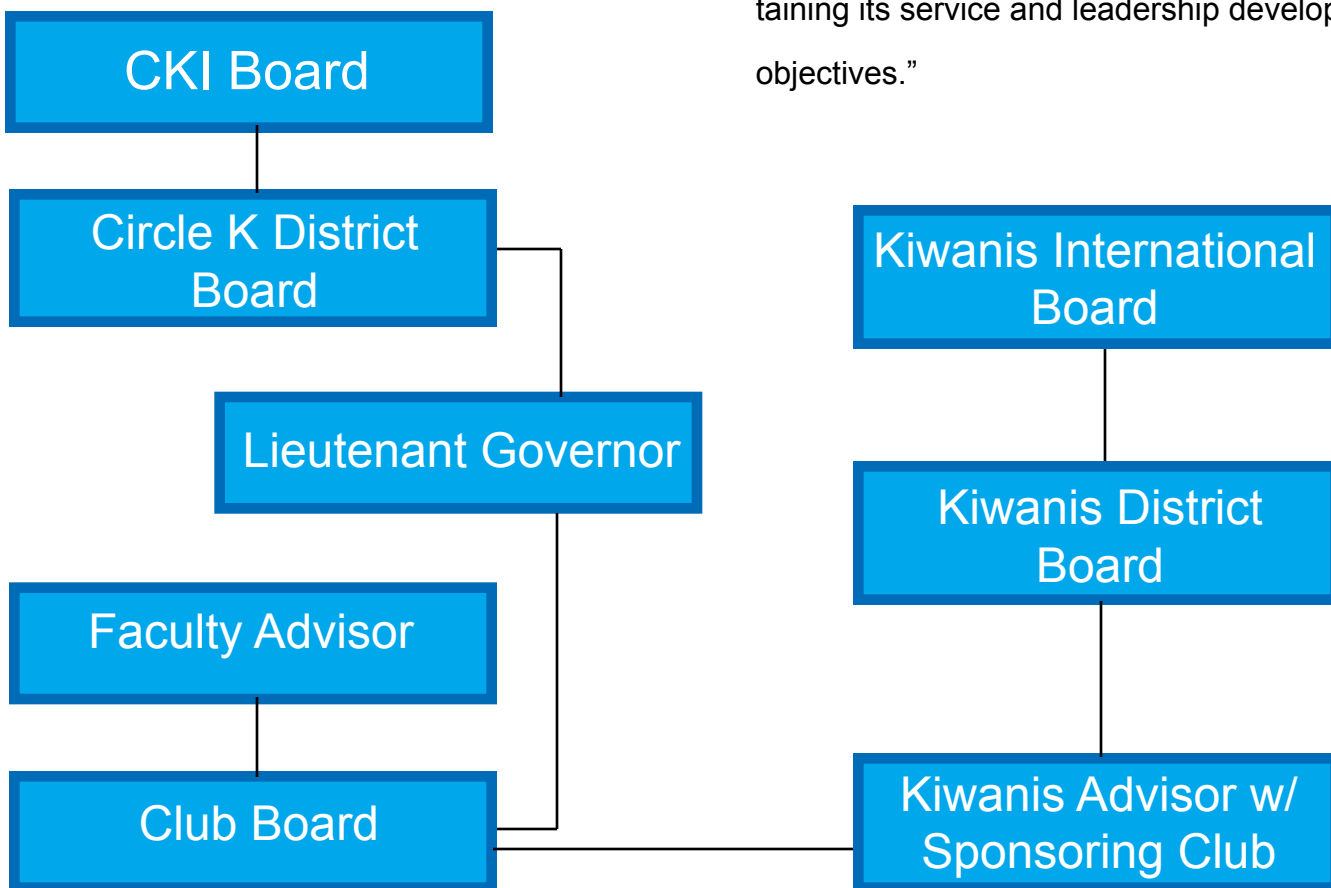
districts.”

District Level

“Circle K International is divided into districts that either a state or a combination of states, provinces and/or countries. They are regionally identified. The main function of the district is to develop and maintain Circle K clubs within the specified region. The chief spokesperson and leader of the district is the governor.”

Club Level

“The club is the first and foremost important level of Circle K International. The club level is where the mission of Circle K is realized. Clubs are the heart of Circle K’s service. The other levels exist to provide consultation and develop program materials to assist and support the club in attaining its service and leadership development objectives.”



Roles of the District Board

Governor

Run the district board meetings, oversees the district, and acts as a liaison to the International board.

Secretary

Records the district board meeting minutes, keeps records, collects club and district MRFs, and creates district directories

Treasurer

Prepares the district budget, collects dues, and oversees all financial matters.

Bulletin Editor

Compiles articles and creates and distributes the district bulletin to clubs.

Lieutenant Governor

Oversees the clubs in his/her division, assisting with questions and problems and acting as a liaison between the club and district level.

District Chairs

Convention Chair

Organizes all aspects of District Convention held in March of his/her term.

Awards, Regulation & History Chair

Reviews and updates District bylaws and policies, educates, and informs the board on parliamentary procedure, and oversees the club awards process.

K-Family/Outreach Chair

Promotes Kiwanis Family Relations and raises outreach money from area Kiwanis clubs.

Membership, Development & Growth Chair

Works with clubs on member recruitment, education, and retention as well as building new clubs in the district.

Service Chair

Ensures the clubs are counting service hours correctly and assists clubs with new service project ideas as needed.

Special Events Chair

Oversees all aspects of Membership Awareness Conference and Spring Fling

Webmaster

Maintains the district website and email reflectors.

WUM-kipedia

Events

MAC - Membership Awareness Conference held every Octobers at an Easter Seals Camp in the Wisconsin Dells.

Spring Fling - Spring version of MAC.

DCON - District Convention where all the clubs in the district elect new board members and celebrate the past year and hand out awards.

ICON- International version of DCON.

LSSP - Large Scale Service Project held before ICON each year.

MERP - Membership Education and Recruitment Program held over the summer.

Winter

Weekend

Getaway

(WWG) - A

social weekend held

each January

in Upper Michigan

that usually

includes outdoor winter activities.

Positions

LTG - Lieutenant Governor

MD&G - Membership, Development & Growth Chair.

ARH - Awards, Regulations, & History Chair.

IT - International Trustee

Other Terms

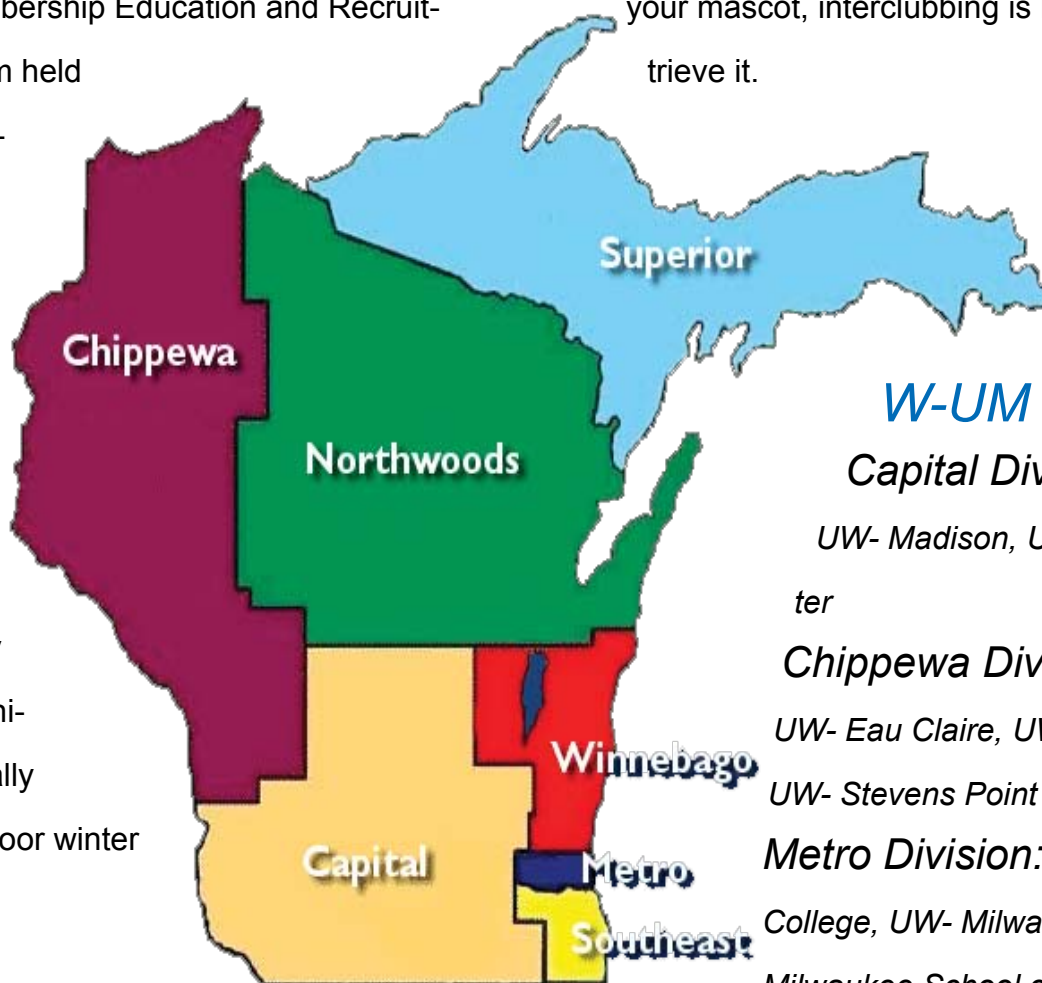
CKI - Circle K International

Positions

W-UM - Wisconsin Upper Michigan

Interclub - any activity in which at least four

members from one club participate with at least four members from another club. If a club has your mascot, interclubbing is how you retrieve it.



W-UM District

Capital Division:

UW- Madison, UW- Whitewater

Chippewa Division:

UW- Eau Claire, UW- Lacrosse, UW- Stevens Point

Metro Division: Alverno

College, UW- Milwaukee, Milwaukee School of Engineering (MSOE), Marquette University

Northwoods Division:

Lawrence University, UW- Fox Valley UW- Green Bay, St. Norbert College

Southeast Division: UW-Parkside,

UW- Waukesha, Carroll College, Carthage College

Superior Division: Northern Michigan Uni-

versity, Michigan Technological University, Bay de Noc Community College

Winnebago Division: Marian College,

Ripon College, UW- Oshkosh