

# AHPRC Spring 2021 Seminar Series

Thursdays, February 11<sup>th</sup>, March 4<sup>th</sup>, April 15<sup>th</sup>

Via Microsoft Teams

## Research-embedded Training Camps: Doing Science with Elite Athletes



February 11<sup>th</sup> (1-3 PM CST)

**Louise Burke, PhD**

Mary Mackillop Institute of Health Research  
(Australian Catholic University)

## The Biomechanics and Energetics of Marathon Running

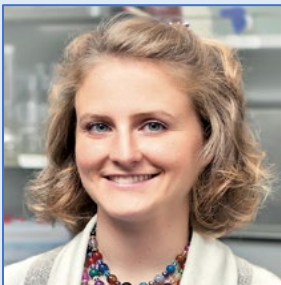
March 4<sup>th</sup> (12-2 PM CST)

**Rodger Kram, PhD**

University of Colorado Boulder



## The Impact of Sleep and Circadian Disruption on Metabolic Homeostasis



April 15<sup>th</sup> (12-2 PM CST)

**Josiane L. Broussard, PhD**

*Colorado State University*