



MARQUETTE



Who We Are

- The GSO consists of:
 - Faculty advisor: Dr. Douglas Woods, Dean of the Graduate School
 - Executive officer board
 - Chair: Jack Senefeld
 - Vice Chair: Erin Wissler
 - Community Integration Chair: Brice Cleland
 - GSO Council members
 - All other graduate students





MARQUETTE

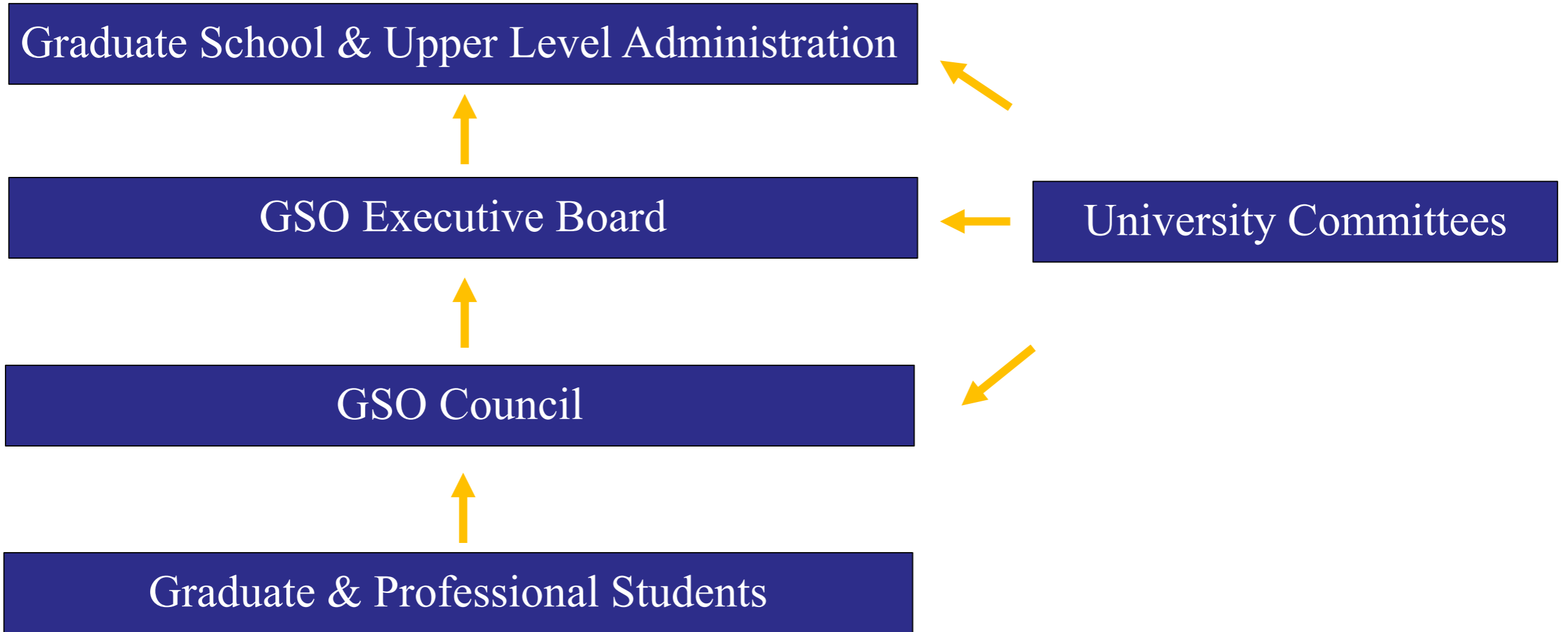


What We Do

- The GSO...
 - Serves as a liaison between the graduate community and university administration.
 - Acts as an outlet for student concerns to be acknowledged and addressed.
 - Advocates for improvements in graduate student life.
 - Promotes opportunities for growth and unity across the graduate community.



GSO Workflow





MARQUETTE



Two New Positions

- **Logistics Manager** - responsible for financial transactions associated with the GSO, coordinating event space, and coordinating event times.
- **Communications Manager** - responsible for communications on behalf of the GSO in both print and digital media sources, manage social media accounts for the GSO, and maintain and update the GSO website.



MARQUETTE



Fall Semester GSO Activities

- September 8th – Happy Hour @ Caffrey's
- September 17th – Brigg's & Al's Run (8k Run/Walk)
- October 11th – Bowling @ AMU
- ~October 29th – Service event
- November 11th – Happy Hour @ TBD
- December 8th – Bagel/Donuts & Coffee @ TBD

MARQUETTE



Access to Employee Wellness Classes

- Coordinator: Kristin Kipp Kristin.kipp@Marquette.edu
- \$5/class
 - Immersive cycling
 - Yoga
 - Cardio kickboxing
 - Cross-fit
 - Pilates

<http://www.marquette.edu/wellness/employees/documents/GroupFitnessCalendarFall2016.pdf>

MARQUETTE



3-minute Thesis Competition

- February 24, 2017
- One student will be chosen as the winner to represent Marquette in a regional competition at Midwest Association of Graduate Schools in April 2017.
- Effectively explain YOUR research in three minutes in lay terms to an audience and a panel of judges



Health Insurance: 2016-2017 AY

- Offer applies to US citizens that are Graduate Assistants (RA, TA, and GA)
 - International students have alternative health insurance
 - Graduate assistants are not provided this offer
- **October 1, 2016 deadline**
- Premium= \$4,796
 - \$2,000 graduate school contribution (**originally \$1,515**)
 - ***\$2,796 student contribution***



MARQUETTE



Contact Us

- Website: <http://www.marquette.edu/grad/GSO/>
- Email: gso@marquette.edu
- Phone: 414-288-5841
- Office: Holthusen 460 D
- Mailbox: Lead Center #93