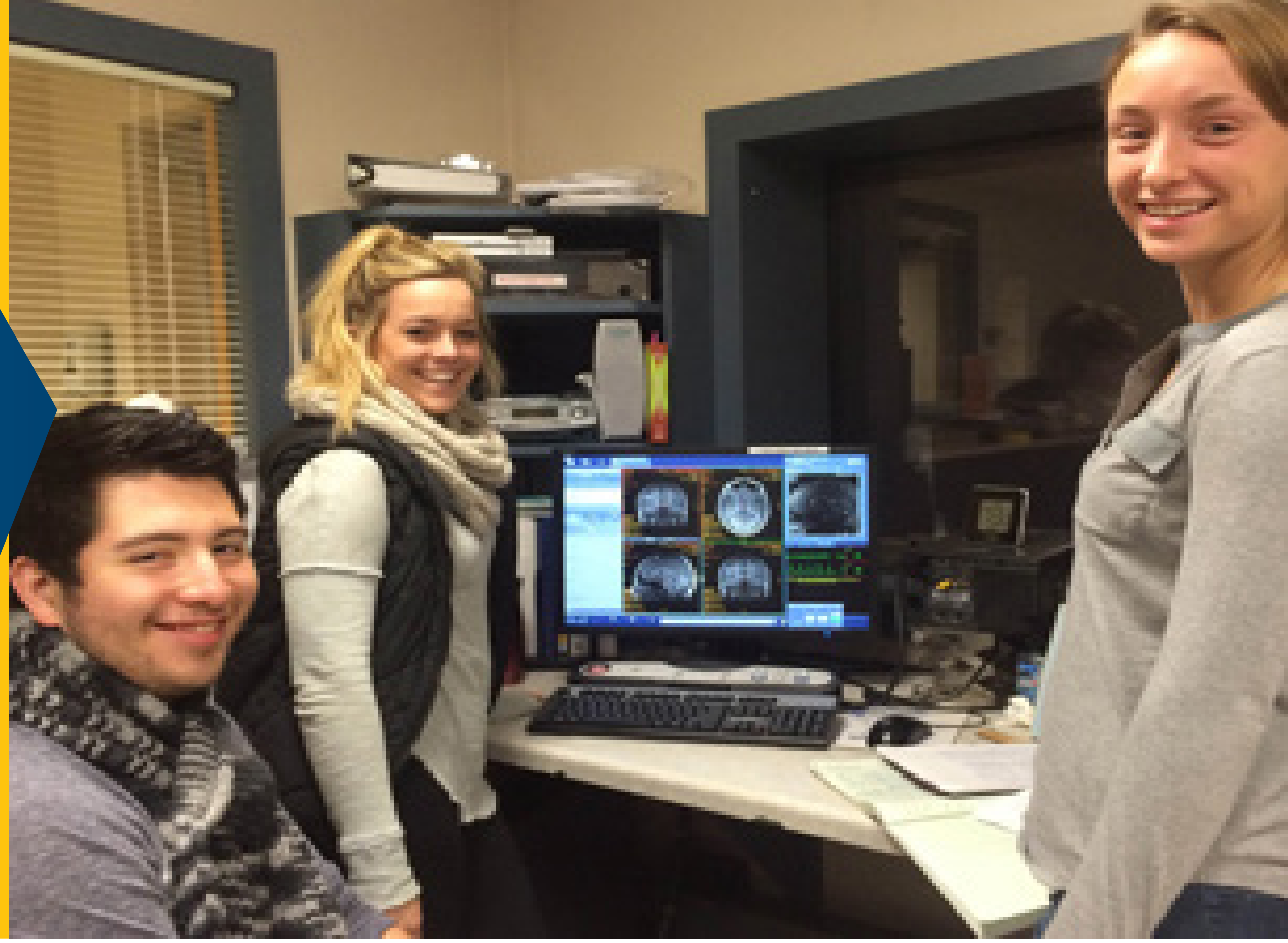


INTERDISCIPLINARY AUTISM INITIATIVE (IAI)



SUMMARY

This proposal entails a planned collaboration to develop the Interdisciplinary Autism Initiative, a cross-college and cross-departmental effort to unite autism research, services, educational training, and community outreach across campus and the community, via faculty, staff, student, and community agency involvement.

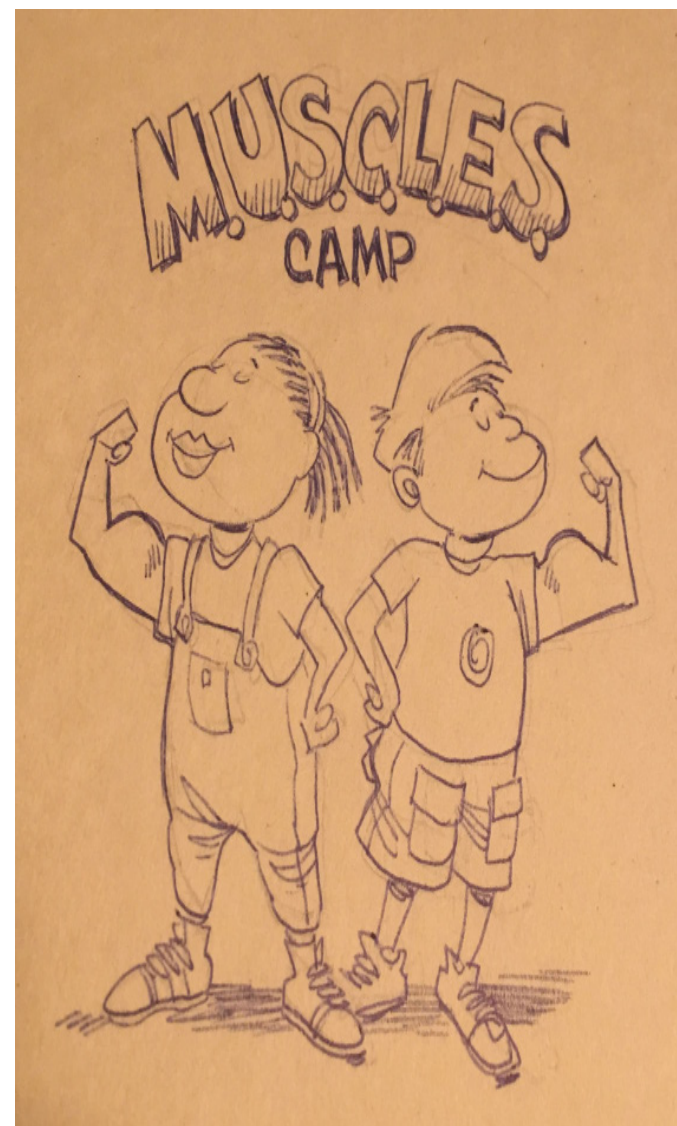


DESCRIPTION

To meet the needs of people with Autism Spectrum Disorder (ASD) and their families, and to build momentum in establishing Marquette as a leader in ASD, we propose developing an Interdisciplinary Autism Initiative (IAI) that has four primary objectives: 1) interdisciplinary ASD Research, 2) interdisciplinary Services, 3) inter-professional ASD Education for undergraduate and graduate students, and 4) ASD Outreach to connect with stakeholders and support the MU and Milwaukee community.



Autism: Healthcare Here we go!
Marquette University
Free



MILESTONES

07/18-10/18

1) Convene Deans of associated colleges; 2) Develop space needs request; 3) Develop a website

10/18-12/18

1) Create mission statement; 2) Create goal plans for each division; 3) Develop business plan

1/19-3/19

1) Develop research IRB proposals with community partners; 2) Furnish space; 3) Create Research Registry

3/19-6/19

1) Develop undergrad internship; 2) Plan summer/fall ASD Programs; 3) Transition to revenue generation

ABOUT OUR TEAM

Dr. Amy Van Hecke, IAI Research workgroup
Psychology, Marquette University

Dr. Mary Carlson, IAI Education workgroup
Educational Policy & Leadership, Marquette University

Wendy Krueger, MS, CCC-SLP, IAI Clinical Services workgroup

Speech Pathology & Audiology, Marquette University

Dr. Doris Walker-Dalhouse, IAI Education workgroup
Educational Policy & Leadership, Marquette University

Dr. Terry Young, IAI Clinical services workgroup
Adjunct Counseling Psychology, Marquette University

Community Partner, New Life Resources Clinic

Dr. Norah Johnson, IAI Research workgroup
Nursing, Marquette University

Dr. Khadijah Makky, IAI Education workgroup
Biomedical Sciences, Marquette University

Alexander Barrington, IAI Research Registry & Data Core Coordinator

Student, Biomedical Engineering, Marquette University

Emily Levine, Community Partner

Executive Director, Autism Society of Southeastern Wisconsin

Fr. John Schwantes, SJ, IAI Chaplain

Our team, comprised of community partners and MU faculty and students from 5 colleges, has come together to improve the lives of individuals with ASD. This project synthesizes prior cooperative work done by team members over the past 5 years.

BEYOND BOUNDARIES

(1) Pursuit of Academic Excellence: Inter-professional training opportunities in ASD will increase; (2) Culture of Inclusion: Empathy for people on the spectrum, who struggle with an “invisible” difference, will be targeted via educational campaigns; (3) Research in Action: Research collaborations will grow, via a joint Research Registry, joint grants, and conferences; (4) Social Responsibility through Community Engagement: IAI will engage with community stakeholders and create a community advisory board. Further, it is expected that over 150 families will participate in programs, over 600 toddlers will be screened, and over 30 school professionals will be trained, each year, all while providing training opportunities for students.