

Marquette Internet Explorer & Firewall Configuration Tool Installation Instructions

1. Go to <http://www.marquette.edu/its/help/downloads> and follow links to download the tool.

Marquette Configuration Tool for Windows

The Marquette University Internet Explorer and Firewall Configuration Tool adjusts your Windows Firewall and Internet Explorer Popup blocker settings to allow Marquette web sites and applications to work properly.

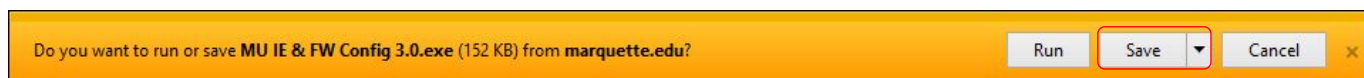
[▶ Find out more and download the tool](#)

2. Click on **Download the MU IE & FW Config Tool**.

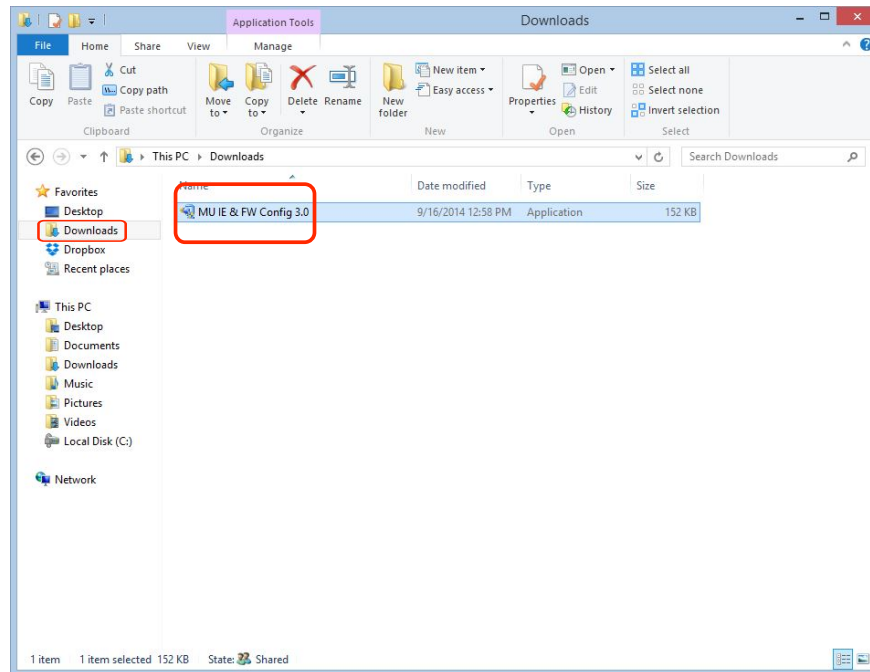
[▶ Download the MU IE & FW Config Tool](#)

[▶ Download installation instructions \(PDF\)](#)

3. When the **File Download – Security Warning** window appears, click on **Save**.



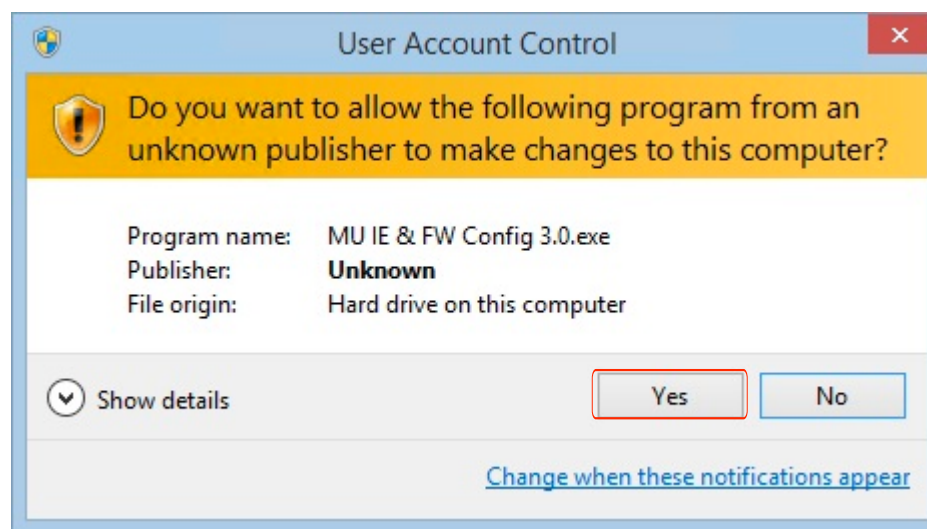
4. Download will be in your downloads folder after you press **Save**.



5. After the file is saved, close all open windows. Find the **MU IE & FW Config 3.0.EXE** file on your Downloads folder and follow the instructions below.

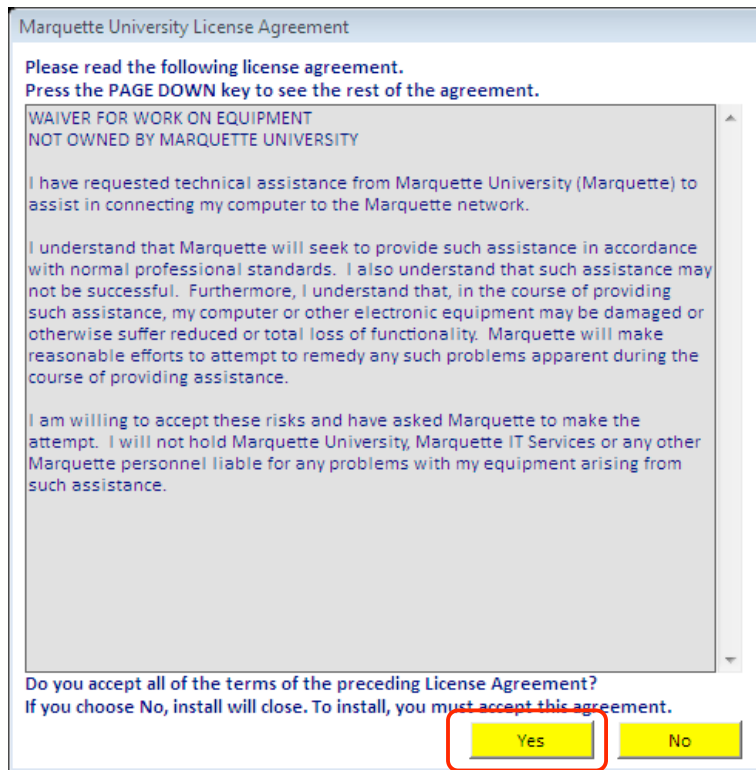
Microsoft Windows 7 and 8.1:

Double click on the file and when the "User Account Control" window appears, click on **Yes**.



Proceed to step 6.

6. When the “Marquette University License Agreement” window appears, click on **Yes**.



Installation will now begin. A command box will be open. This is normal.



7. Wait until all windows close.

Installation is now complete.