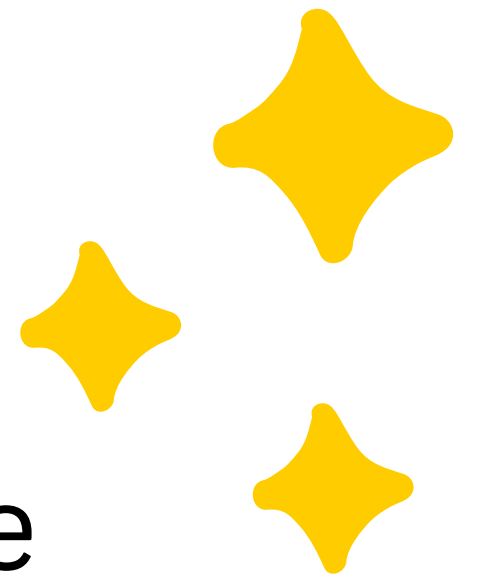




# DUAL ENROLLMENT



Dual Enrollment (DE) is a program for high schoolers to apply a college course through their school

“There is strong evidence that DE... improves academic outcomes for students, including completing high school, enrolling in college, and completing college degrees.”

[Understanding Dual Enrollment](#)

## 2.5 MILLION

High schoolers completed Dual Enrollment classes nationally



About one third of high school students have taken at least one DE course by graduation

### BENEFITS

- Reduces tuition costs
- Early exposure to college classes
- Improves academic outcomes
- Explore new classes not offered in high school

### THINGS TO CONSIDER

- The final grade goes on the college transcript
- The classes often have more homework and are faster paced
- Some courses are offered at the college and require travel

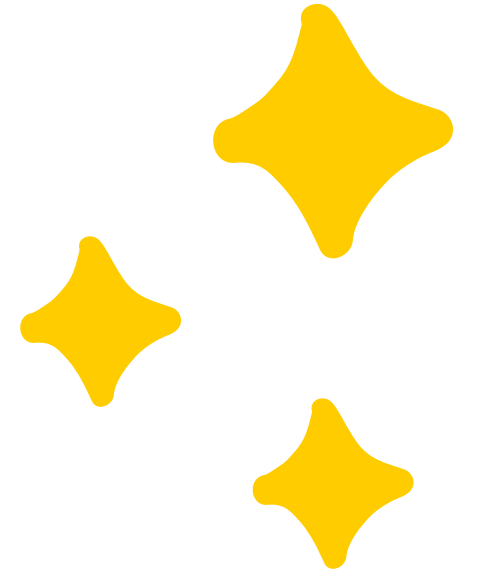
[Read More about Wisconsin Dual Enrollment here!](#)

Lots of Dual Enrollment Classes Exist for Students!  
**Talk to your counselor about classes available at your school!**





# AP CLASSES & DUAL ENROLLMENT



## WHAT'S THE DIFFERENCE?

### DE COURSES

- Pass the course to be eligible for college credit
- Instructors design the class
- Could be asynchronous, on a college campus, or taught in the high school
- DE tuition vary across schools

### AP CLASSES

- Have to earn a 3 or higher on the AP exam to be eligible for college credit
- Standardized curriculum
- Some colleges require higher AP scores than others
- Not the same as a college class

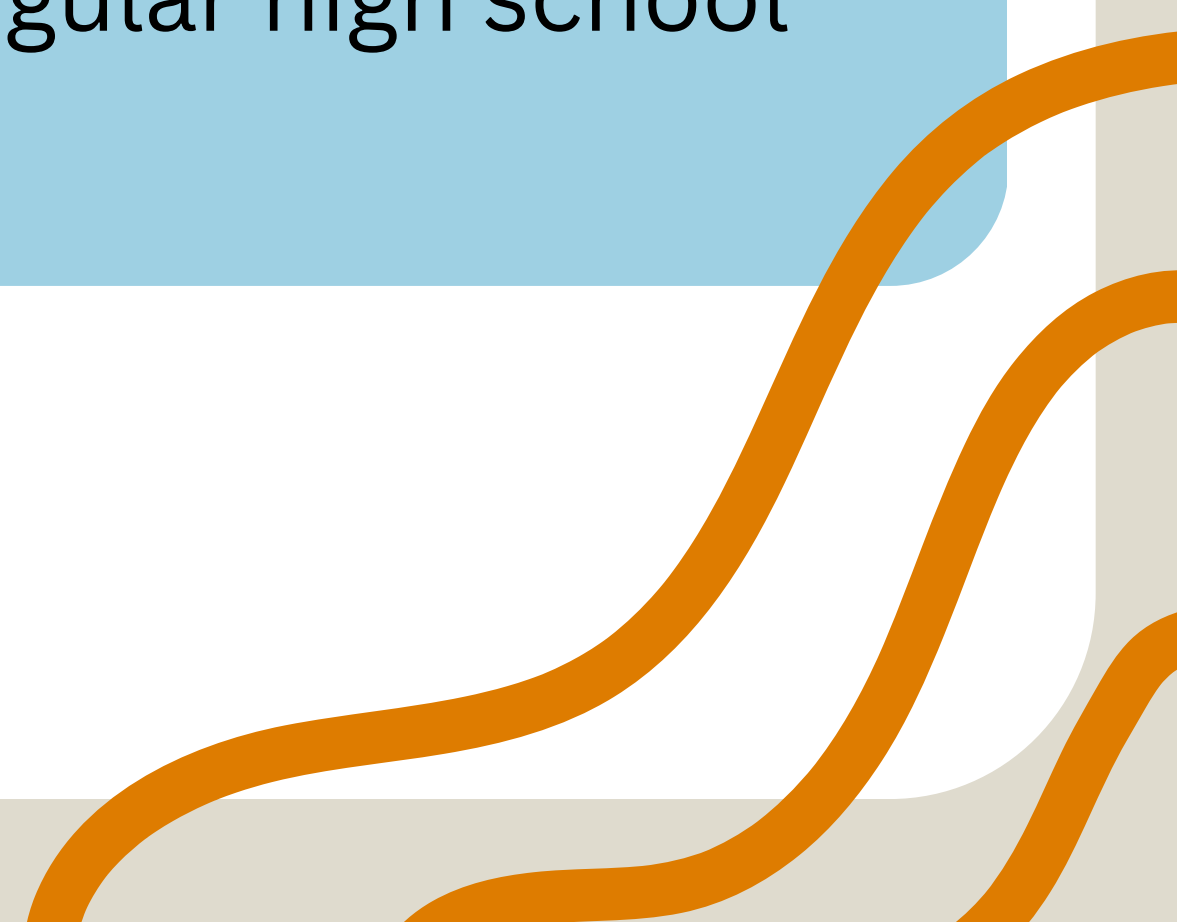
### AP & DE RESOURCES

[AP vs. Dual Enrollment: The Pros and Cons](#)

[AP vs. Dual Enrollment in 2025](#)

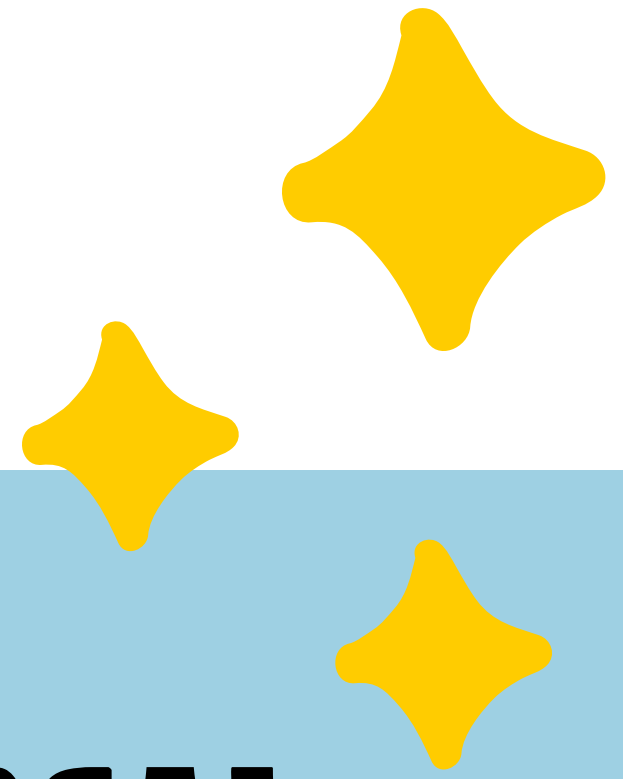
### SIMILARITIES

- Credit transferability ranging from college to college
- Larger workload compared to a regular high school class





# RESOURCES



[Marquette Dual Enrollment](#)

[UWM Dual Enrollment](#)

[MATC Dual Enrollment](#)

[WI DPI Dual Enrollment](#)

## LOCAL INFORMATION



[Understanding Dual Enrollment  
from Teacher's College](#)

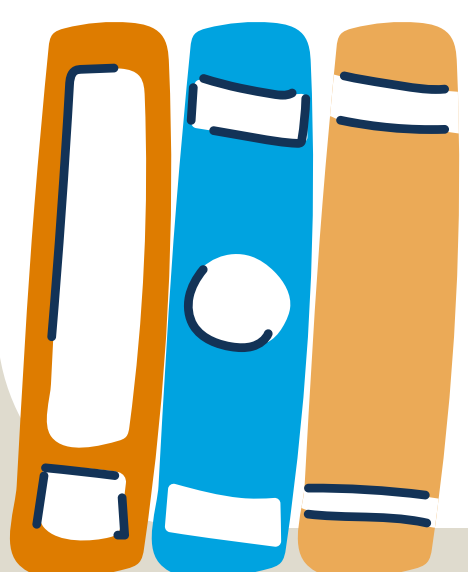
[How many students are taking Dual  
Enrollment Courses? From Teacher's College](#)

[Insight into Academia Article on Policy  
Efforts in Wisconsin](#)

[Ed Week article on Equitable Access to AP Courses](#)

[Wisconsin Watch Article on Dual Enrollment in MPS](#)

## FOLLOW UP ARTICLES



Information Sheet Created by:

Dyani Palmer  
Gabriel Velez, PhD

[BLEST Hub](#)

**CENTER for  
URBAN RESEARCH,  
TEACHING AND  
OUTREACH**

